

Hypothesis

Open Access

Bovine endometrial stromal cells display osteogenic properties

Gaetano Donofrio*¹, Valentina Franceschi¹, Antonio Capocéfalo¹, Sandro Cavarani¹ and Iain Martin Sheldon²

Address: ¹Università di Parma, Facoltà di Medicina Veterinaria, Dipartimento di Salute Animale, Sezione di Malattie Infettive degli Animali, Via del Taglio 8, 43100 Parma, Italy and ²Institute of Life Science, School of Medicine, Swansea University, Singleton Park, Swansea, SA2 8PP, UK

Email: Gaetano Donofrio* - gaetano.donofrio@unipr.it; Valentina Franceschi - valefr83@hotmail.com; Antonio Capocéfalo - antonio.capocéfalo@studenti.unipr.it; Sandro Cavarani - sandro.cavarani@unipr.it; Iain Martin Sheldon - I.M.Sheldon@swansea.ac.uk

* Corresponding author

Published: 16 December 2008

Received: 25 August 2008

Reproductive Biology and Endocrinology 2008, **6**:65 doi:10.1186/1477-7827-6-65

Accepted: 16 December 2008

This article is available from: <http://www.rbej.com/content/6/1/65>

© 2008 Donofrio et al; licensee BioMed Central Ltd.

This is an Open Access article distributed under the terms of the Creative Commons Attribution License (<http://creativecommons.org/licenses/by/2.0>), which permits unrestricted use, distribution, and reproduction in any medium, provided the original work is properly cited.

Abstract

The endometrium is central to mammalian fertility. The endometrial stromal cells are very dynamic, growing and differentiating throughout the estrous cycle and pregnancy. In humans, stromal cells appear to have progenitor or stem cell capabilities and the cells can even differentiate into bone. It is not clear whether bovine endometrial stromal cells exhibit a similar phenotypic plasticity. So, the present study tested the hypothesis that bovine endometrial stromal cells could be differentiated along an osteogenic lineage. Pure populations of bovine stromal cells were isolated from the endometrium. The endometrial stromal cell phenotype was confirmed by morphology, prostaglandin secretion, and susceptibility to viral infection. However, cultivation of the cells in standard endometrial cell culture medium lead to a mesenchymal phenotype similar to that of bovine bone marrow cells. Furthermore, the endometrial stromal cells developed signs of osteogenesis, such as alizarin positive nodules. When the stromal cells were cultured in a specific osteogenic medium the cells rapidly developed the characteristics of mineralized bone. In conclusion, the present study has identified that stromal cells from the bovine endometrium show a capability for phenotype plasticity similar to mesenchymal progenitor cells. These observations pave the way for further investigation of the mechanisms of stroma cell differentiation in the bovine reproductive tract.

Background

The endometrium is central to normal fertility in all mammals. The endometrium develops in the embryo from the paramesonephric duct, with stromal cells differentiating from uterine mesenchymal cells [1]. The adult endometrium consists of luminal and glandular epithelial cells, stromal cells, vascular smooth muscle cells, endothelial cells, and leukocytes [1]. The stromal cells play a crucial role in directing the development, growth, differentiation, and function of the overlying epithelium

in the embryo and adult [2-4]. The stromal and epithelial cells proliferate and differentiate throughout the estrous cycle and during pregnancy, mainly under the control of the ovarian steroid hormones, estradiol and progesterone [5,6]. However, the stromal cells play a critical role as the receptors for estradiol and progesterone are mainly in the stromal rather than the epithelial cells [5-7].

The endometrium is a highly regenerative tissue, and stromal progenitor cells of mesenchymal origin appear to be

present in the adult endometrium of at least humans and mice [8]. Normally these progenitor cells differentiate into endometrial stromal cells under the influence of paracrine growth factors and ovarian steroids [7,8]. Functional approaches have been used to identify the candidate endometrial stem/progenitor cells, as there are no specific stem cell markers [8]. For example, the stromal progenitor cells from the human endometrium have the potential to differentiate into other terminal cell lineages including bone, fat and cartilage, in a similar manner to bone marrow-derived mesenchymal cells [8]. It has not been established if stromal progenitor cells exist in the bovine endometrium or whether stromal cells have the capability to differentiate into other lineages.

It is important to explore the plasticity of stromal cells to understand the mechanisms of stromal regeneration and differentiation during reproductive cycles and pregnancy. In addition, stromal cells may differentiate into other lineages in the endometrium that are associated with infertility. Osseous metaplasia of stromal cells is found in the human endometrium and is a sporadic cause of infertility in humans and horses [9,10]; although this has not been investigated in cattle. So, the present study tested the hypothesis that bovine endometrial stromal cells could be differentiated along an osteogenic lineage.

Methods

Endometrial cells isolation and primary cultures

Bovine uteri from post-pubertal non-pregnant healthy cross-bred beef animals 18 to 28 months old with no evidence of genital disease were collected at a local abattoir immediately after slaughter for human consumption. The uteri were kept on ice until further processing in the laboratory. The physiological stage of the reproductive cycle for each genital tract was determined by observation of the ovarian morphology [11]. Genital tracts with an ovarian Stage I corpus luteum were selected and the tissue ipsilateral to the corpus luteum was used for endometrial cell isolation by a fractional enzyme dissociation method to avoid potential confounding effects of the stage of estrous cycle or site of tissue collection, as widely established previously [12-15]. The uterine horn ipsilateral to the corpus luteum was opened lengthwise with scissors from the oviduct to the bifurcation of the uterine horns. The endometrium was washed with sterile saline three times and the endometrium carefully dissected free from the underlying tissues with scissors. The endometrium was then cut into strips and placed into serum-free RPMI-1640 (Sigma, Milano, Italy) supplemented with 50 IU/mL of penicillin, 50 µg/mL of streptomycin and 2.5 µg/mL of Amphotericin B (Sigma, Milano, Italy), working under sterile conditions. The strips were then chopped into 1 mm³ pieces, placed into HBSS (Sigma, Milano, Italy) and processed as previously described [15]. Briefly, tissue was

digested in 25 mL sterile filtered digestive solution, which was made by dissolving 50 mg trypsin III (Roche), 50 mg collagenase II (Sigma, Milano, Italy), 100 mg Bovine Serum Albumine (BSA; Sigma) and 10 mg DNase I (Sigma) in 100 mL phenol-red free HBSS. Following a 1.5 h incubation in a shaking water bath at 37°C, the cell suspension was filtered through a 40 µm mesh (Fisher Scientific) to remove undigested material and the filtrate was resuspended in a washing medium comprising of phenol-red free HBSS containing 10% Fetal Bovine Serum (FBS) (Sigma) and 3 µg/mL trypsin inhibitor (Sigma). The suspension was centrifuged at 100 × g for 10 min and following two further washes in washing medium, the cells were resuspended in RPMI-1640 containing 10% FBS, 50 IU/mL of penicillin, 50 µg/mL of streptomycin and 2.5 µg/mL of Amphotericin B. The cells were plated at a density of 1 × 10⁵ cells in 2 mL per well using 24-well plates (Nunc). To obtain separate stromal and epithelial cell populations, the cell suspension was removed 18 h after plating, which allowed selective attachment of stromal cells. The removed cell suspension was then replated and incubated allowing epithelial cells to adhere. Stromal and epithelial cell populations were distinguished by cell morphology as previously described [13]. The absence of immune cells in the uterine cell cultures was confirmed by Reverse Transcriptase Polymerase Chain Reaction (RT-PCR) for the Cluster of Differentiation 45 (CD45) pan-leukocyte marker as previously described [15]. The culture media was changed every 48–72 h until the cells reached confluence. All cultures were maintained at 37°C, 5% CO₂ in air, in a humidified incubator.

Antibody Array

25 cm² flasks were seeded with 5 × 10⁵ of bovine bone marrow stromal cells or bovine endometrial stromal cells in 10 mL of minimal essential medium (EMEM, Lonza, Belgium) containing 10% FBS, 2 mM L-Glutamin 50 IU/mL of penicillin, 50 µg/mL of streptomycin, 2.5 µg/mL of Amphotericin B and maintained at 37°C, 5% CO₂ in air, in a humidified incubator. 48 h post cells seeding, medium was substituted with 3 mL of serum free medium (EMEM containing, 2 mM L-Glutamin 50 IU/mL of penicillin, 50 µg/mL of streptomycin) and incubated at 37°C, 5% CO₂ in air, in a humidified incubator. After 24 h the conditioned medium, was removed from the flasks, clarified by high speed centrifugation (14.000 rpm for 5 min at 4°C) and then screened for cytokine secretion using an Antibody Array system as according to the manufacturer's instructions (RayBio, Belgium, Human Cytokine Antibody Array 3.1, RayBiotech, Inc).

Viral infection

To further characterize the endometrial stromal cells, the peculiar susceptibility to Bovine Herpesvirus-1 (BoHV-4) infection was tested using a recombinant BoHV-4 express-

ing enhanced green fluorescent protein (EGFP) [16,17]. Recombinant BoHV-4EGFP Δ TK was obtained by insertion of the CMV/EGFP expression cassette from the pEGFP-C1 plasmid into the thymidine kinase (TK) locus of the DN 599 BoHV-4 strain [17]. BoHV-4EGFP Δ TK and the NADL strain of Bovine Viral diarrhoea Virus (BVDV), were propagated by infecting confluent monolayers of Madin-Darby Bovine Kidney cells (MDBK) at a multiplicity of infection (m.o.i.) of 0.5 tissue cell infectious doses/50 (TCID₅₀) per cell and maintained in Minimum Essential Medium (MEM) with 2% FBS for 2 h. The medium was then removed and replaced by fresh MEM containing 10% FBS. The virus was purified when approximately 90% of the cell monolayer exhibited a Cytopathic Effect (CPE), at approximately 72 h post-infection (P.I.). Cell-associated virions were freed by three cycles of freezing the flasks at -80°C and thawing. Cell debris was removed by low-speed centrifugation, and virions were pelleted through a 3 ml cushion of 30% sucrose in PBS, in a Beckman 70 Ti rotor at 35,000 rpm for 90 min at 4°C. Viral pellets were resuspended in cold MEM without FBS and TCID₅₀ were determined on MDBK cells by limiting dilution [18].

MTT cell survival assay

The MTT (3-(4,5-dimethylthiazol-2-yl)-2,5-diphenyltetrazolium bromide) cell metabolic assay was used to measure the number of live cells [19]. Briefly, the cell cultures were incubated for 4 h with 100 µg/well MTT before addition of 100 µL of solubilization solution (10% SDS in HCl 0.01 M), and further incubation for 16 h at 37°C. The yellow tetrazolium MTT salt is reduced in metabolically active cells to form insoluble purple formazan crystals, which are solubilized by the addition of a detergent [19]. The optical density was measured at 540 nm, using 690 nm as the reference wavelength in an SLT-Lab microreader (Salzburg, Austria); for each cell type, a linear relationship between cell number and optical density had already been established [20]. Each experiment was repeated three times and each treatment was performed with eight replicates. Statistical differences among treatments were tested by Student's *t* test.

In vitro osteogenic differentiation

First or second passage bovine endometrial stromal cells were subcultured in six-well plates at a density of 10⁶ cells per well till confluence and evaluated for their differentiation potential by exposing the cells to osteoinductive medium [21]. Osteogenic differentiation medium consisted of basic medium supplemented with 100 nM dexamethasone, 10 mM-glycerophosphate, and 0.05 mM ascorbic acid-2-phosphate [21]. The cells cultured in basic medium served as controls. On days 3, 7, 14 and 21, cells from both osteoinductive and control groups were

washed twice with phosphate-buffered saline and stained [21].

Staining

At each defined time point, the plated cells were fixed with 10% paraformaldehyde and stained using Alizarin (Sigma) and von Kossa stain (Bio-Optica, Milano, Italy) to evaluate osteogenic differentiation of adipose-derived cells. Extracellular matrix mineral deposition was determined by the presence of black nodules using von Kossa staining, which allows the visualization of calcium deposition by replacing the calcium with silver nitrate [21]. Darker staining of cellular nodules using von Kossa dye reflects more calcium deposition in the extracellular matrix [21]. The level of mineral deposition in the stromal cells stained with von Kossa dye was evaluated by examining 10 randomly selected areas of each culture well using an Axiovert 200 microscope and the associated AxioVision LE Rel. 4.4 densitometry software (Zeiss, Jena, Germany).

Testing the hypothesis

a) Isolation of pure populations of bovine endometrial stromal cells
Endometrial cell cultures were established by the fractional enzyme dissociation method described in Materials and Methods, and there was no mRNA expression of the CD45 pan-leukocyte marker in the epithelial or stromal cells (data not shown) as previously described [15]. The stromal cell purity was estimated to be greater than 95% as determined by microscopy (Fig. 1), preferential secretion of prostaglandin E₂ rather than F_{2α}' [12,15] and a high susceptibility to Bovine herpesvirus 4 (Fig. 2) [16].

b) Bovine endometrial stromal cells are indistinguishable from bovine bone marrow stromal cells

First or second passage endometrial stromal cells were left to grow until they reached confluence. These cells were morphologically indistinguishable with a confluent monolayer of a first or second passage of bovine bone marrow mesenchymal stromal cells prepared as previously described (Fig. 3) [21]. Such morphological similarity was confirmed in terms of functionality comparing the pattern of constitutively secreted cytokines by an Antibody Array (Fig. 4) [22].

c) Long term culture of endometrial stromal cells is accompanied by a morphological change of the cell monolayer

Confluent monolayers of bovine endometrial stromal cells were left to grow with the medium changed every 48 to 72 h, and cell morphology was examined daily by light microscopy. From the 18th day of each culture a strong morphological change was detectable, where the stromal cells aggregated and formed nodules (Fig. 5a). These morphological changes were not accompanied by cell death as determined by the absence of significant changes in cell

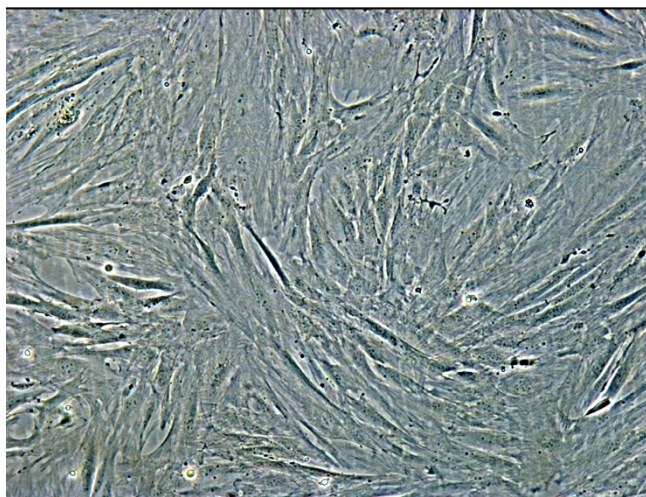


Figure 1
Representative phase contrast images (10x) of pure population of bovine endometrial stromal cells.

numbers during the study period, evaluated using the MTT assay ($P = 0.8$). The nodules reacted positively to alizarin staining (Fig. 5b), which indicated a possible osteogenic lineage commitment of the bovine endometrial stromal cells.

d) Osteogenic medium strongly enhances the osteogenic differentiation of bovine endometrial stromal cells

To further test if endometrial stromal cells in long term culture were capable of osteoblastic differentiation, confluent cells were cultured in an osteoinductive medium consisting of growing medium supplemented with h-glycerophosphate, dexamethasone and ascorbic acid [21,23]. When exposed to osteogenic medium, the treated cells changed their morphology within 24 h of treatment and aggregated into nodules, whereas the cells in control medium took 18 days to display the same phenotype. From the second week the treated cells but not the control cells, formed larger nodules enriched with extracellular matrix, which reacted positively to von Kossa staining, indicating the accumulation of calcium (Fig. 6). These data strongly support a bone-type mineralization of the

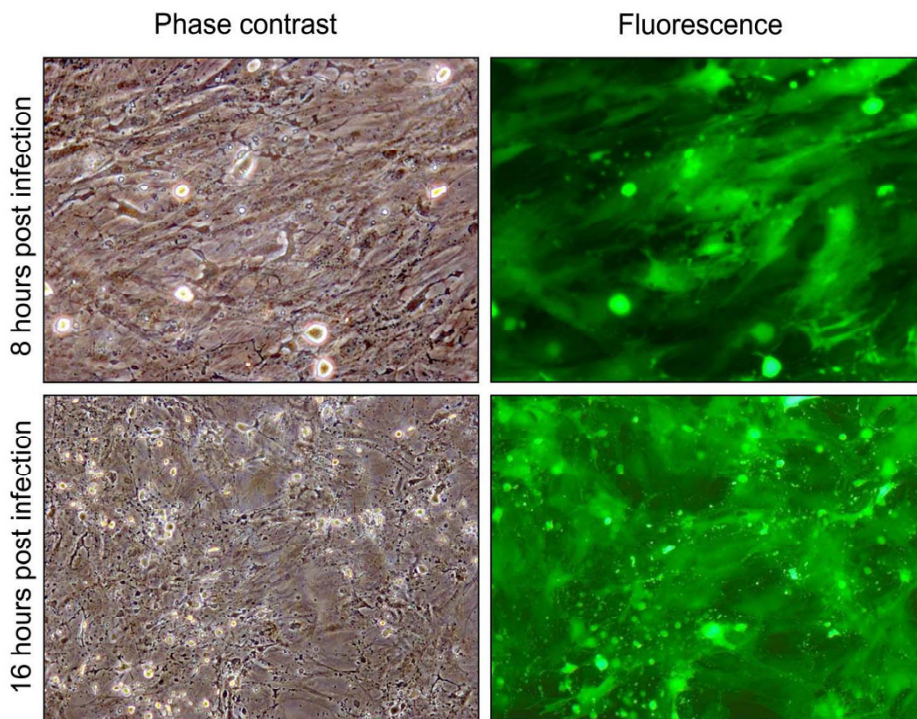


Figure 2
Representative phase contrast images and fluorescence (green) (10x) of bovine endometrial stromal cells at different time (12, 24, 48, 72 h) post infection (P.I.) with 1 m.o.i. of BoHV-4 EGFPΔTK and the respective phase contrast images of uninfected control. Spreading of the infection can be observed by the green colour invading the field during the time and the CPE is morphologically appreciable by the change of the cell shape, where the cells tend to shrink, becoming roundest and detaching the flask surface. The experiment was repeated three times giving the same result. Each experiment was repeated three times giving similar results.

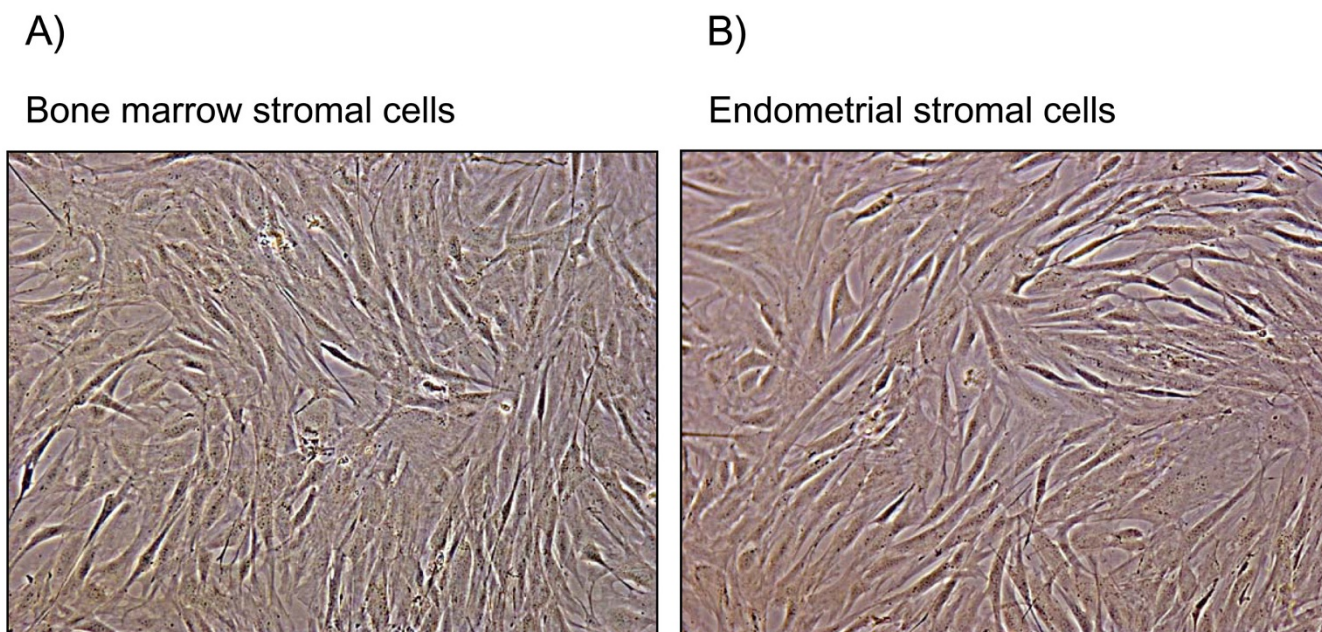


Figure 3
Representative phase contrast images (10×) of pure population of bovine endometrial stromal cells and bovine bone marrow stromal cells with no apparent morphological differences. Each experiment was repeated three times giving similar results.

extracellular matrix secreted by differentiated bovine endometrial stromal cells.

Implications of the hypothesis

Bovine endometrial stromal cells were successfully cultured over several weeks as pure populations without immune cell contamination. When the cultures were established the stromal cells had the expected endometrial phenotype in terms of morphology, secretion of prostaglandin E₂ and susceptibility to herpesvirus infection. However, in long-term culture the bovine endometrial stromal cells adopted a mesenchymal phenotype similar to bone marrow derived cells, and showed evidence of differentiation along the osteogenic lineage. Furthermore, this bone-like differentiation was enhanced in the presence of osteogenic medium. The implications of the present study are that stromal cells from the bovine endometrium appear to have the plasticity and/or progenitor cell capability to differentiate into bone.

Until a few years ago, commitment to a cell differentiation pathway was believed to be irreversible and it was assumed that cells acquired a terminal phenotype after going through several intermediate steps [24]. Cell lineages were regarded as separate, so that one cell type could not switch to another. However, this was the case in the present study as the endometrial stromal phenotype was

able to differentiate into a bone phenotype. This observation supports the more recent concept that cells exhibit phenotypic plasticity [25]. Plasticity is the ability to give rise to cell types whose phenotype is different from that of the source tissue. The environmental cues that direct stromal cell growth and differentiation in the normal endometrium include growth factors and ovarian steroids [5,6,8]. Presumably the absence of epithelial cells, paracrine factors or steroids must allow the stromal cells to differentiate into another lineage.

Non hematopoietic cells of mesodermal derivation exist in a number of postnatal organs and connective tissues, most notably the bone marrow, but also gut, lung, liver, adipose, dental pulp, and periodontal ligament [26,27]. Similar cells have also been isolated from peripheral [28], placental [29], and umbilical cord [30] blood. Typically, these cells occupy a perivascular niche where they support other cell types (e.g., hematopoietic cells) and contribute to the creation and maintenance of different connective and skeletal tissues.

In the present study, stromal cells in osteogenic medium had a more rapid development of bone, which agrees with previous observations that the manipulation of culture conditions can drive various cell types to different lineages including bone [25,31]. Pittenger established that adult

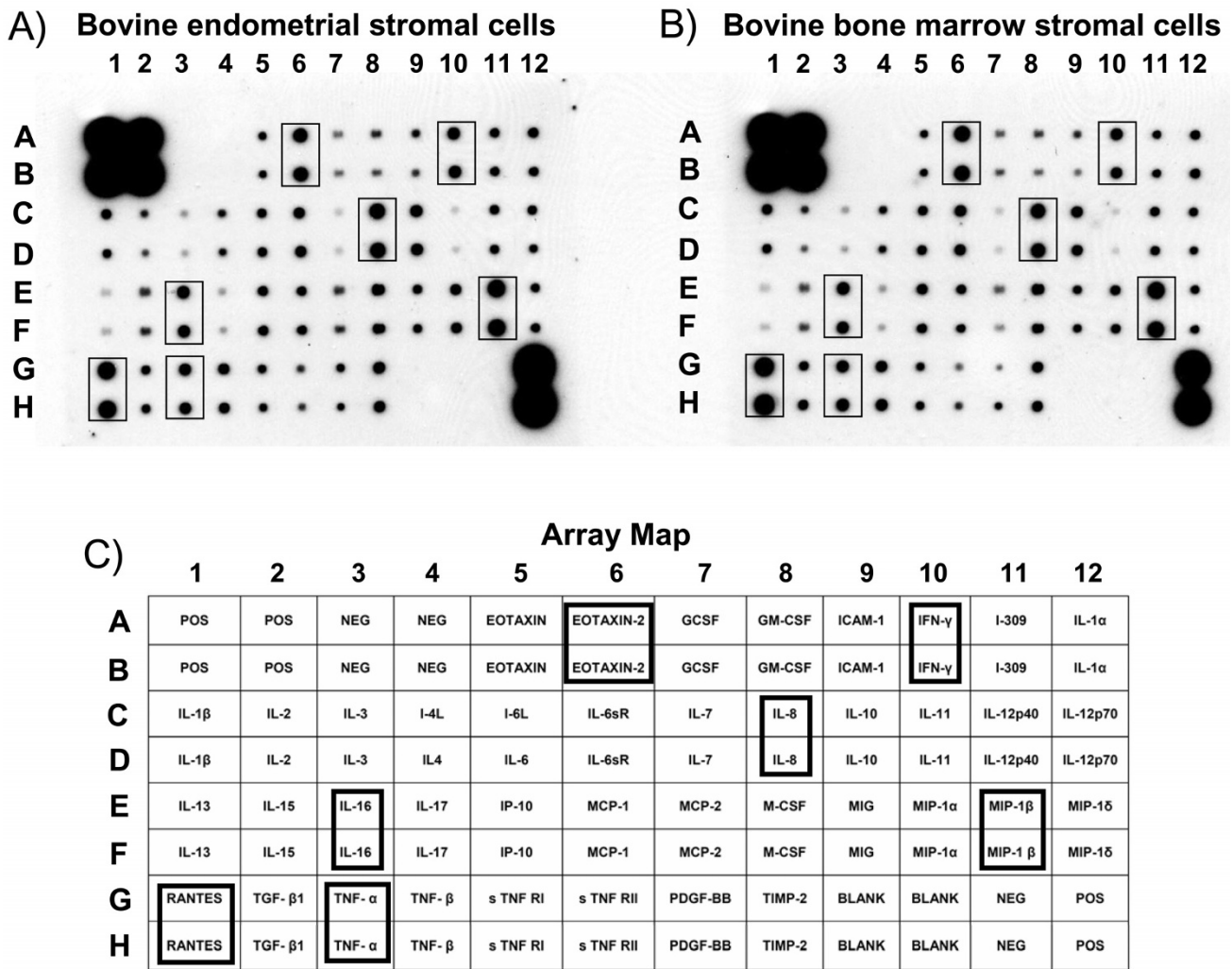


Figure 4

Patterns of secreted molecules into the supernatant of bovine endometrial stromal cells (a) and bovine bone marrow stromal cells (B), detected by an antibody Array. C) Map of the specific spotted antibodies in duplicate. Positive, negative and BLANK controls are indicated by POS, NEG and BLANK respectively. Squares indicate over expressed and secreted molecules, where RANTES, MIP-1 β , EOTAXIN-2, IL-8, IFN- γ , IL-16 and TNF- α are the most abundant in both cellular types. The test was repeated twice, giving identical results.

marrow stromal cells could differentiate *in vitro* into several cell lines including osteoblasts [25]. However, to induce differentiation into adipocytes, chondrocytes, or osteoblasts, specific factors must be added to the culture medium. Differentiation into osteoblasts, which generates phenotypic characteristics such as alkaline phosphatase and osteopontin production, occurs when cells are exposed to dexamethasone, β -glycerol phosphate, vitamin C, and 10% serum [21]. The present culture sys-

tem also included serum, but an osteogenic medium was not required to obtain the bone phenotype. However, addition of dexamethasone, glycerophosphate and ascorbic acid certainly enhanced bone formation. Why the stromal cells differentiated along the bone lineage without osteogenic medium is intriguing. Perhaps this reflects their mesenchymal origin [1]. It is also interesting to note that endometrial cells express many genes in common with bone cells, such as those of the Wnt/ β -catenin, Trans-

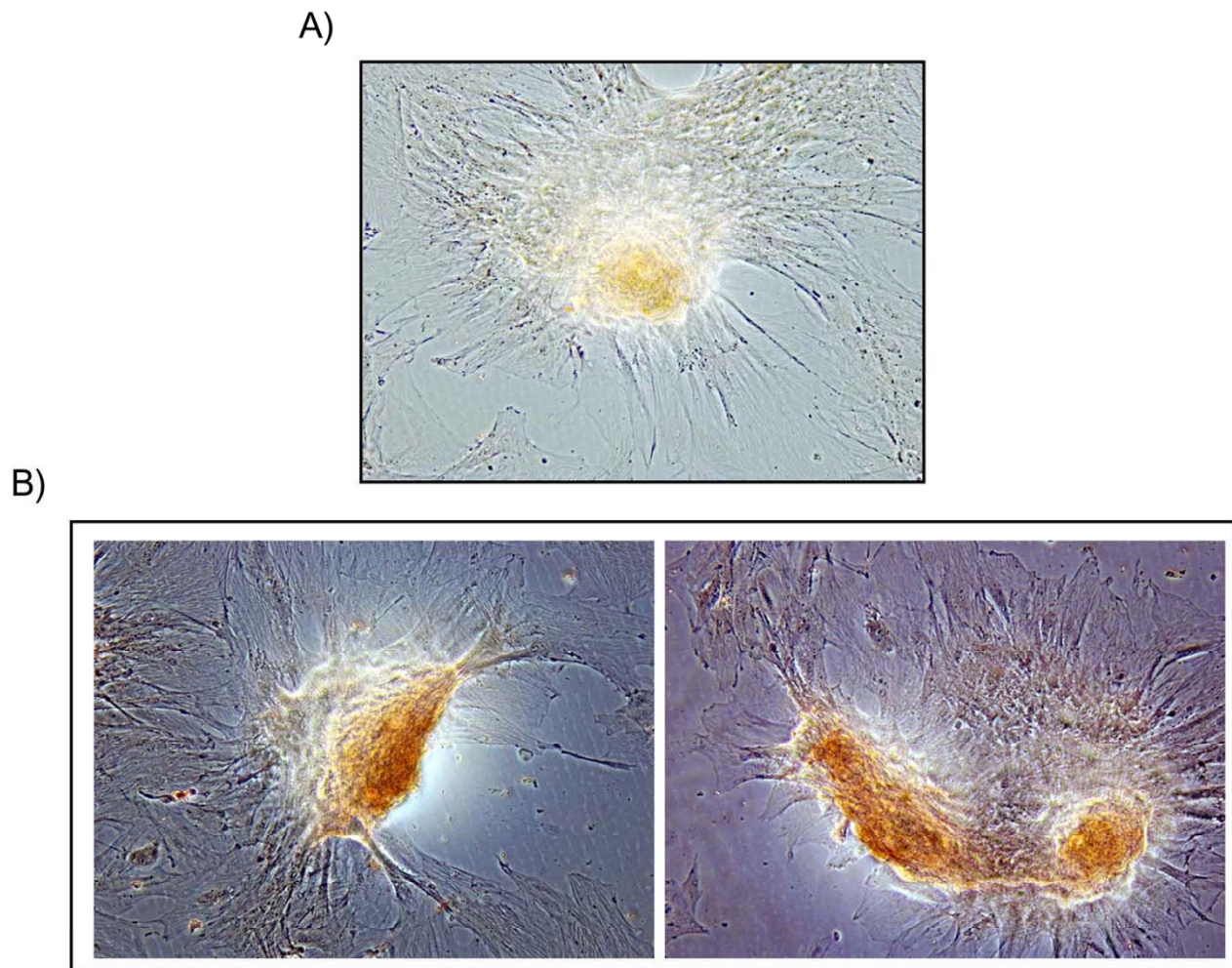


Figure 5

(a) Representative phase contrast images (10×) of bovine endometrial stromal cells long term culture interested by a strong morphological change accompanied by nodules formation, which reacted positively to alizarin staining (b). Each experiment was repeated three times giving similar results.

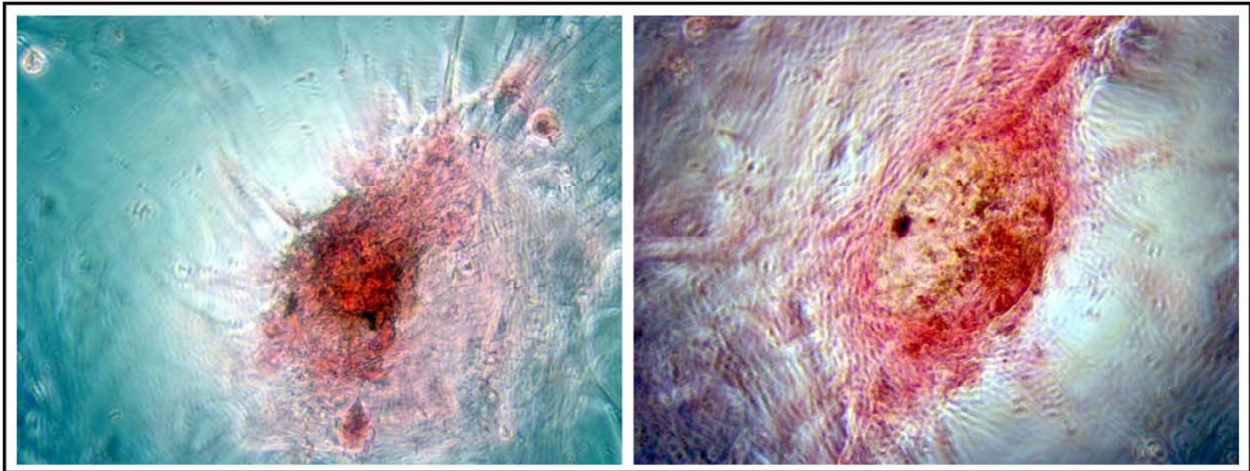
forming Growth Factor- β , Bone Morphogenic Protein, Notch and Hedgehog pathways [32,33]. Furthermore, the endometrial stroma and bone are closely regulated by estradiol, progesterone and insulin-like growth factors [34-36].

Whatever, the signaling pathways involved in differentiating endometrial stromal cells, it does appear that bovine stromal cells can differentiate into bone and this may have clinical relevance. Osseous metaplasia of stromal cells is found in the human endometrium and is a sporadic cause of infertility in humans [9] and horses [10]. Although this has not been investigated in cattle, it has been suggested

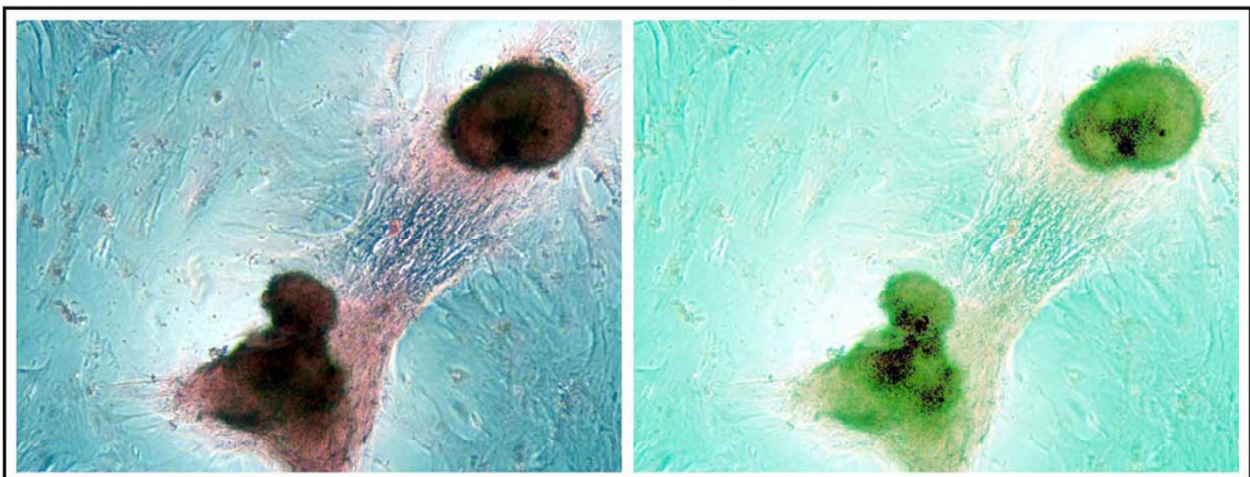
that acute or chronic inflammation may lead to ossification by metaplasia [37]. Certainly inflammation of the endometrium is extremely common in cattle [38].

In conclusion, the present study has identified that stromal cells from the bovine endometrium show the capability of osteogenic differentiation. The cells in long-term culture undergo spontaneous osteogenic differentiation, and this can be enhanced by specific osteogenic growth factors. These observations pave the way for further investigation of the mechanisms of stroma cell differentiation.

A)



B)

**Figure 6**

(a) Representative phase contrast images (10 \times) of bovine endometrial stromal cells at 10 days post induction with osteogenic medium, where nodules formed and started to accumulate extracellular matrix mineral deposition as reflected by the presence of black nodules using von Kossa staining. (b) At 21 days post induction with osteogenic medium nodules increased of number, size, organization as well as mineral deposition. The level of mineral deposition (dark dots) starting from the centre of the nodules (green) in the stromal cells stained with von Kossa dye was evaluated using an Axiovert 200 microscope and the associated AxioVision LE Rel. 4.4 densitometry software (Zeiss, Jena, Germany).

Competing interests

The authors declare that they have no competing interests.

Authors' contributions

GD conceived, designed, performed the experiments and wrote the paper. VF and AC contributed to perform the experiments. IMS provided the bovine endometrial stromal cells and contributed to writing of the paper.

Acknowledgements

We thank Dr Virna Conti for valuable advice on cell differentiation, and The Royal Society, Italian Ministry of University and Scientific Research (Italian National Grant MIUR, PRIN 2005, 2005078885), the Fondazione Cariparma (Cassa di Risparmio di Parma, Italy) for financial support. Sheldon is a BBSRC Research Development Fellow (Grant No. BB/D02028X/1).

References

- Gilbert SF: *Developmental Biology* fourth edition. Sinauer Associated; 1994.
- Donjacour AA, Cunha GR: **Stromal regulation of epithelial function.** *Cancer Treat Res* 1991, **53**:335-364.
- Cunha GR, Bigsby RM, Cooke PS, Sugimura Y: **Stromal-epithelial interactions in adult organs: review.** *Cell Differ* 1985, **17**:137-148.
- Cooke PS, Buchanan DL, Young P, Setiawan T, Brody J, Korach KS, Taylor J, Lubahn DB, Cunha GR: **Stromal estrogen receptors mediate mitogenic effects of estradiol on uterine epithelium.** *Proc Natl Acad Sci USA* 1997, **94**:6535-6540.
- Bigsby RM, Cunha GR: **Estrogen stimulation of deoxyribonucleic acid synthesis in uterine epithelial cells which lack estrogen receptors.** *Endocrinology* 1986, **119**:390-396.
- Kurita T, Young P, Brody JR, Lydon JP, O'Malley BW, Cunha GR: **Stromal progesterone receptors mediate the inhibitory effects of progesterone on estrogen-induced uterine epithelial cell deoxyribonucleic acid synthesis.** *Endocrinology* 1998, **139**:4708-4713.
- MacIntyre DM, Lim HC, Ryan K, Kimmins S, Small JA, MacLaren LA: **Implantation-associated changes in bovine uterine expression of integrins and extracellular matrix.** *Biol Reprod* 2002, **66**(5):1430-6.
- Gargett CE, Chan RW, Schwab KE: **Hormone and growth factor signaling in endometrial renewal: Role of stem/progenitor cells.** *Mol Cell Endocrinol* 2008, **288**(1-2):22-9.
- Lainas T, Zorzovilis I, Petsas G, Alexopoulou E, Lainas G, Ioakimidis T: **Osseous metaplasia: case report and review.** *Fertil Steril* 2004, **82**(5):1433-5.
- Walter I, Helmreich M, Handler J, Aurich C: **Mineralised deposits in the uterine glands of mares with chronic endometrial degeneration.** *Vet Rec* 2003, **153**(23):708-710.
- Ireland JJ, Murphee RL, Coulson PB: **Accuracy of predicting stages of bovine estrous cycle by gross appearance of the corpus luteum.** *J Dairy Sci* 1980, **63**:155-160.
- Asselin E, Goff AK, Bergeron H, Fortier MA: **Influence of sex steroids on the production of prostaglandins F2 alpha and E2 and response to oxytocin in cultured epithelial and stromal cells of the bovine endometrium.** *Biol Reprod* 1996, **54**:371-379.
- Fortier MA, Guilbault LA, Grasso F: **Specific properties of epithelial and stromal cells from the endometrium of cows.** *J Reprod Fertil* 1988, **83**:239-248.
- Kim JJ, Fortier MA: **Cell type specificity and protein kinase C dependency on the stimulation of prostaglandin E2 and prostaglandin F2 alpha production by oxytocin and platelet-activating factor in bovine endometrial cells.** *J Reprod Fertil* 1995, **103**:239-247.
- Herath S, Fischer DF, Werling D, Williams EJ, Lilly ST, Dobson H, Bryant CE, Sheldon IM: **Expression and function of toll-like receptor 4 in the endometrial cells of the uterus.** *Endocrinology* 2006, **147**:562-570.
- Donofrio G, Herath S, Sartori C, Cavirani S, Flammini CF, Sheldon IM: **Bovine herpesvirus 4 is tropic for bovine endometrial cells and modulates endocrine function.** *Reproduction* 2007, **134**(1):183-197.
- Donofrio G, Cavirani S, Taddei S, van Santen VL: **Potential of bovine herpesvirus 4 as a gene delivery vector.** *J Virol Methods* 2002, **101**:49-61.
- Vanderplasschen A, Goltz M, Lyaku J, Benarafa C, Buhk HJ, Thiry E, Pastoret PP: **The replication in vitro of the gammaherpesvirus bovine herpesvirus 4 is restricted by its DNA synthesis dependence on the S phase of the cell cycle.** *Virology* 1995, **213**:328-340.
- Berridge MV, Herst PM, Tan AS: **Tetrazolium dyes as tools in cell biology: new insights into their cellular reduction.** *Biotechnol Annu Rev* 2005, **11**:127-52.
- Aras MA, Hartnett KA, Aizenman E: **Assessment of cell viability in primary neuronal cultures.** *Curr Protoc Neurosci* 2008, **Chapter 7**: Unit 7.18.
- Colleoni S, Donofrio G, Lagutina I, Duchi R, Galli C, Lazzari G: **Establishment, differentiation, electroporation, viral transduction, and nuclear transfer of bovine and porcine mesenchymal stem cells.** *Cloning Stem Cells* 2005, **7**(3):154-66.
- Huang RP: **Cytokine Antibody Array: A promising tool to identify molecular targets for drug discovery.** *Comb Chem High Throughput Screen* 2003, **6**(8):769-75.
- Bosnakovski D, Mizuno M, Kim G, Takagi S, Okumura M, Fujinaga T: **Isolation and multilineage differentiation of bovine bone marrow mesenchymal stem cells.** *Cell Tissue Res* 2005, **319**(2):243-53.
- Delorme B, Chateauvieux S, Charbord P: **The concept of mesenchymal stem cells.** *Regen Med* 2006, **1**(4):497-509.
- Pittenger MF, Mackay AM, Beck SC, Jaiswal RK, Douglas R, Mosca JD, Moorman MA, Simonetti DW, Craig S, Marshak DR: **Multilineage potential of adult human mesenchymal stem cells.** *Science* 1999, **284**:143-147.
- Gronthos S, Mankani M, Brahimi J, Robey PG, Shi S: **Postnatal human dental pulp stem cells (DPSCs) in vitro and in vivo.** *Proc Natl Acad Sci USA* 2000, **97**:13625-13630.
- Zannettino AC, Paton S, Arthur A, Khor F, Itescu S, Gimble JM, Gronthos S: **Multipotential human adipose-derived stromal stem cells exhibit a perivascular phenotype in vitro and in vivo.** *J Cell Physiol* 2008, **214**:413-421.
- Kuznetsov SA, Mankani MH, Gronthos S, Satomura K, Bianco P, Robey PG: **Circulating skeletal stem cells.** *J Cell Biol* 2001, **153**:1133-1140.
- Kögler G, Sensken S, Airey JA, Trapp T, Müschen M, Feldhahn N, Liedtke S, Sorg RV, Fischer J, Rosenbaum C, Greschat S, Knipper A, Bender J, Degistirici O, Gao J, Caplan AL, Colletti EJ, Almeida-Porada G, Müller HW, Zanjani E, Wernet P: **A new human somatic stem cell from placental cord blood with intrinsic pluripotent differentiation potential.** *J Exp Med* 2004, **200**:123-135.
- Kim BO, Tian H, Prasongsukarn K, Wu J, Angoulvant D, Wnendt S, Muhs A, Spitzkovsky D, Li RK: **Cell transplantation improves ventricular function after a myocardial infarction: A preclinical study of human unrestricted somatic stem cells in a porcine model.** *Circulation* 2005, **112**:196-1104.
- Jager M, Degistirici O, Knipper A, Fischer F, Sager M, Krauspe R: **Bone healing and migration of cord blood-derived stem cells into a critical size femoral defect after xenotransplantation.** *J Bone Miner Res* 2007, **22**(8):1224-1233.
- Deng ZL, Sharff KA, Tang N, Song WX, Luo J, Luo X, Chen J, Bennett E, Reid R, Manning D, Xue A, Montag AG, Luu HH, Haydon RC, He TC: **Regulation of osteogenic differentiation during skeletal development.** *Front Biosci* 2008, **13**:2001-21.
- Kim S, Choi Y, Bazer FW, Spencer TE: **Identification of genes in the ovine endometrium regulated by interferon tau independent of signal transducer and activator of transcription 1.** *Endocrinology* 2003, **144**(12):5203-14.
- Robinson RS, Mann GE, Gadd TS, Lamming GE, Wathes DC: **The expression of the IGF system in the bovine uterus throughout the oestrous cycle and early pregnancy.** *J Endocrinol* 2000, **165**(2):231-243.
- Lee K, Jessop H, Suswillo R, Zaman G, Lanyon L: **Endocrinology: bone adaptation requires oestrogen receptor-alpha.** *Nature* 2003, **424**(6947):389.
- Zhu L, Pollard JW: **Estradiol-17beta regulates mouse uterine epithelial cell proliferation through insulin-like growth factor I signaling.** *Proc Natl Acad Sci U S A* 2007, **104**(40):15847-15851.
- Acharya U, Pinion SB, Parkin DE, Hamilton MP: **Osseous metaplasia of the endometrium treated by hysteroscopic resection.** *Br J Obstet Gynaecol* 1993, **100**:391-392.
- Gilbert RO, Shin ST, Guard CL, Erb HN, Frajblat M: **Prevalence of endometritis and its effects on reproductive performance of dairy cows.** *Theriogenology* 2005, **64**:879-1888.