

Review

Open Access

Red blood cell glutathione peroxidase activity in female nulligravid and pregnant rats

Giuseppe Gallo and Guglielmo Martino*

Address: Department of Cell Biology, University of Calabria, Rende (CS), Italy

Email: Giuseppe Gallo - pino72@tiscali.it; Guglielmo Martino* - martino@unical.it

* Corresponding author

Published: 26 January 2009

Received: 17 August 2008

Reproductive Biology and Endocrinology 2009, **7**:7 doi:10.1186/1477-7827-7-7

Accepted: 26 January 2009

This article is available from: <http://www.rbej.com/content/7/1/7>

© 2009 Gallo and Martino; licensee BioMed Central Ltd.

This is an Open Access article distributed under the terms of the Creative Commons Attribution License (<http://creativecommons.org/licenses/by/2.0>), which permits unrestricted use, distribution, and reproduction in any medium, provided the original work is properly cited.

Abstract

Background: The alterations of the glutathione peroxidase enzyme complex system occur in physiological conditions such as aging and oxidative stress consequent to strenuous exercise.

Methods: Authors optimize the spectrophotometric method to measure glutathione peroxidase activity in rat red blood cell membranes.

Results: The optimization, when applied to age paired rats, both nulligravid and pregnant, shows that pregnancy induces, at seventeen d of pregnancy, an increase of both reactive oxygen substance concentration in red blood cells and membrane glutathione peroxidase activity.

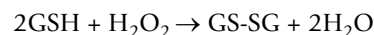
Conclusion: The glutathione peroxidase increase in erythrocyte membranes is induced by systemic oxidative stress long lasting rat pregnancy.

Background

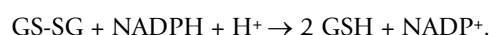
The aim of the present research is to evaluate the contribution of the enzymatic antioxidant glutathione peroxidase (GP) by optimization of the spectrophotometric method of Paglia and Valentine [1] so that it can be applied to blood samples from several animals differing from sex, age and species. After evaluating the usefulness of the method, it was thus, applied to study the effect of the different levels of oxidative stress consequent to pregnancy.

GP (that is PDB 1GPI, according to Protein Data Bank, and EC 1.11.1.9, according to the Enzyme Commission numbering) is the main term of an enzyme family with peroxidase activity. GP, discovered in 1957 by Mills [2], has the function to reduce lipid hydroperoxides to their corresponding alcohols and to reduce free hydrogen peroxide in water. GP1 is found in the cytoplasm of nearly all

mammalian tissues, whose preferred substrate is hydrogen peroxide. The GP reaction is:



where GSH represents reduced monomeric glutathione, and GS-SG represents glutathione disulfide. Glutathione reductase (GR) then reduces the oxidized glutathione to complete the cycle:



GP is a selenium-containing glycoprotein. (fig. 1). As the integrity of subcellular membranes depends heavily on GP, which in turn depends on selenium, the mechanism of GP is at the Selenocystein site, in a Se⁻ form at resting state. This is oxidized by the peroxide to SeOH subse-

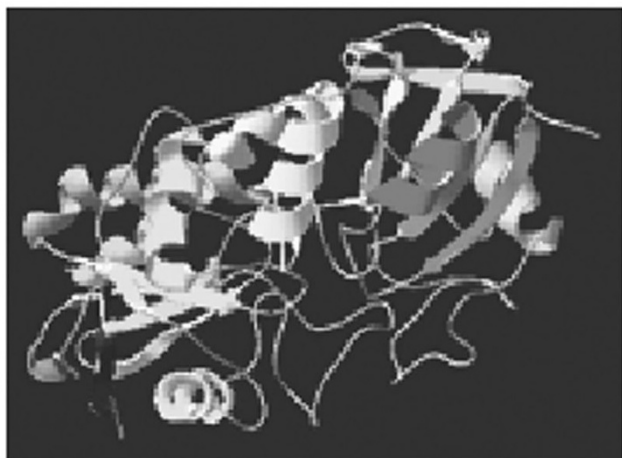


Figure 1
3D view of GP-GR structure (from NCBI PDB).

quently trapped by a GSH molecule to give Se-SG and by another GSH molecule to Se⁻ again, releasing a GS-SG by-product. The human GR, also known as GSR, is an enzyme. (E.C. 1.8.1.7) it reduces glutathione disulfide (GSSG) to the sulphhydryl form GSH, which is an important cellular antioxidant. (fig. 1). For each mol of oxidized glutathione (GSSG) one mol of NADPH is required to produce GSH. NADPH reduces FAD present in GSR to produce a transient FADH⁻ anion. This anion then quickly breaks a disulfide bond and leads to Cys₆₃ nucleophilically attacking the nearest sulfide unit in the GSSG molecule (promoted by His₄₆₇) thus creating a mixed disulfide bond (GS-Cys₅₈) and a GS⁻ anion. His₄₆₇ of GSR then pro-

tonates the GS⁻ to form the first GSH. Afterwards, Cys₆₃ nucleophilically attacks this sulfide releasing a GS⁻ anion, thereby creating the second GSH. So, for each GSSG two reduced GSH antioxidant molecules are produced, scavenging reactive oxygen species in the cell. In cells exposed to high levels of oxidative stress, like red blood cells (RBC), up to 10% of the glucose consumption may be directed to the pentose phosphate pathway (PPP) for the production of the NADPH needed for this reaction. In erythrocytes, if the PPP does not function, then the (RBC) oxidative stress will lead to lysis, anemia.

Alterations of this current production of peroxides and free radicals damage structural components of the cell. Reactive oxygen species can be beneficial, as against pathogens, and are also used in cell signalling. Oxidative stress (formulated in Harman's free radical theory of aging) is also thought to contribute to the process. Recent evidence suggests that oxidative stress may also promote life expectancy [3,4]. Recent findings in male support the process and suggest that antioxidants may modulate disease prevalence in humans. The interactions with the oxidative stress are resumed in figure 2.

At present, there is not sufficient information on oxidative stress and pregnancy available in literature. Ara et al. [5] studied peritoneal adhesions in rats. Jackson et al. [6] evaluated the association between oxidative stress and endometriosis and found only a weak association between thiobarbituric acid-reactive substances (nmol/ml) in serum and endometriosis in 10 pregnant females on 32 total studied. Vanderlelie and Perkins [7] evaluated the oxidative stress at the end of the reproduction in rats in placental and liver tissues, but they do not describe the alteration of GP activity, resulting from the coordination of tissue GSH reductase and GSSG peroxidase enzyme activities in both selenium deficiency and L-NAME oral administration.

The authors verify that GP in RBCs membranes works as a complex to show the comprehensive systemic effect of using GSH to scavenge ROS in RBCs, producing GSSG and the correspondent hydroperoxid equivalent to ROS. Only if all NADPH is oxidized used to replenish GSH stores in the membrane preparations, than the determination of NADPH oxidized by GP, represents a true measurement of the specific enzyme complex [8,9].

Concerning the hypertension mechanisms, the oxidative stress was shown in the rostral ventrolateral medulla (RVLM) [10] and in kidney [11] and are both present in spontaneously hypertensive rats (SHR). Zhou [12] demonstrated that oxidative stress in pregnancy can increase, even if the exact either pro-oxidant or antioxidant status in pregnancy-induced hypertensive patients is not clear [13].

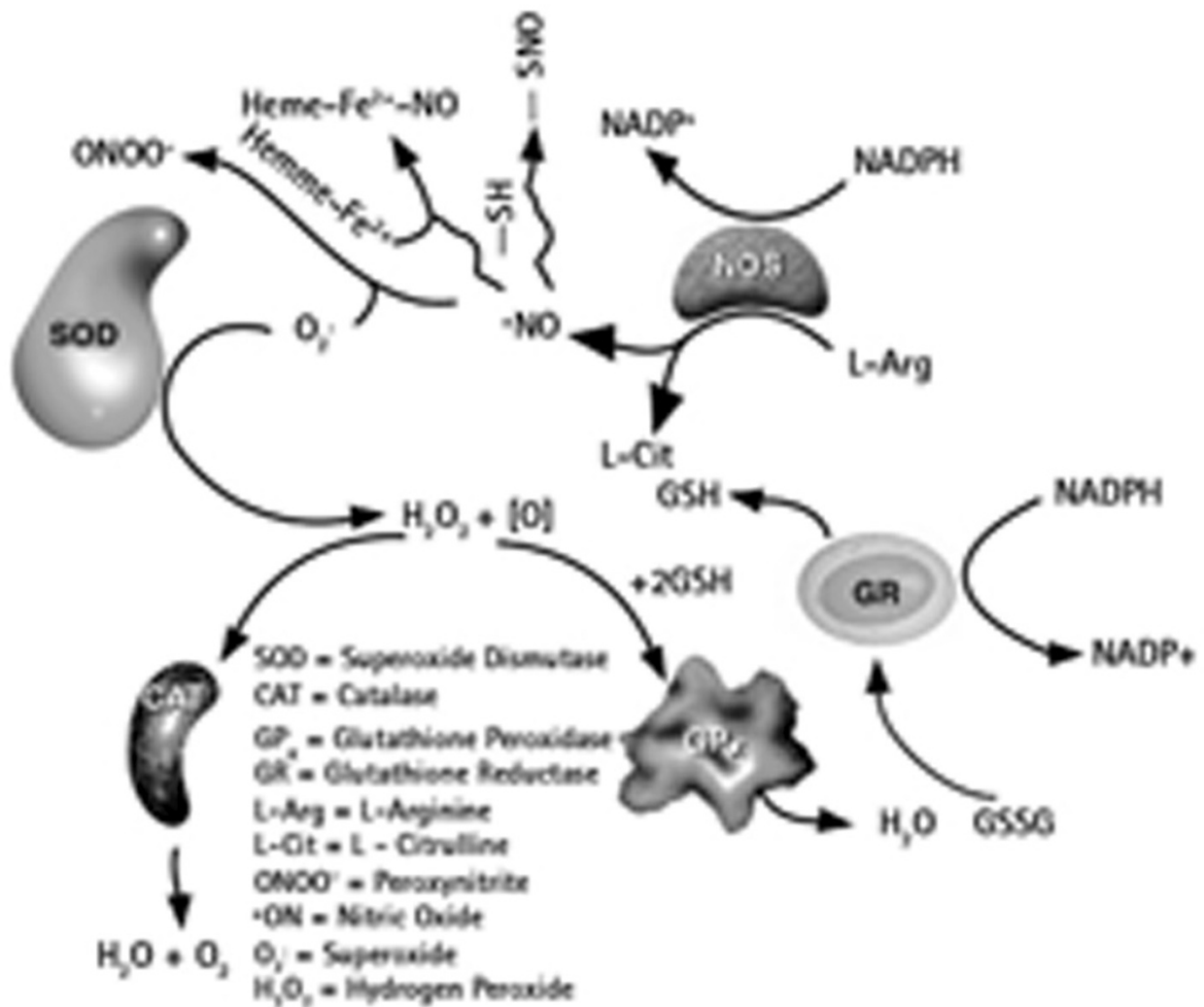


Figure 2
Interaction of GP with the oxidative stress (Merck, Calbiochem 2006/2007 catalogue).

There is no study on rat blood and on the relationship between hypertension and pregnancy.

Methods

Sixteen weeks old nulligravid female Wistar rats were housed at a constant temperature (22°C) in a 12 hours light and dark cycle environment with free access to food and drinking water. Animals were randomised in two groups (n = 6) and fed a standard diet (MilRatti Stefano Morini, S. Polo D'Enza (RE)). The animals were treated according to the european community prescriptions [EU (86/609/EEC)], then cycled and mated with fertile males at proestrous on 120 d of age, with a positive vaginal smear for sperm, the day after proestrous indicating d 0 of pregnancy. The remaining animals continued on their

diets as nulligravid controls. On d 140 pregnant rats were submitted to blood sampling under ether (50 g/kg body weight) anesthesia according to the european community prescriptions [EU (86/609/EEC)] on animal care.

Processing of tissue samples and hemoglobin estimation

Blood, 100 µL of sample drawn by cardiac puncture under ether anesthesia (50 g/kg body weight) are centrifuged and washed twice with 5 mL of 0,9% NaCl. Isolated RBCs are hemolyzed by addition of 1 mL of distilled H₂O. Hemoglobin concentration is determined by mixing 1 mL of Hemoglobin test (Sclavo diagnostics, Siena, Italy) with 0,1 mL of hemolysate. The absorbance at 546 nm is measured in a Shimadzu UVPC 2100 spectrophotometer (A₅₄₆ × 16 = mg Hb/mL) against a blank containing water

instead of hemolysate. The hemolysate is exactly diluted to 3 mg of Hb per millilitre. From this solution, 1 mL is mixed with 0.5 mL of transformation solution (4.5 mM KCN and 0.45 mM $K_3 [Fe(CN)_6]$ adjusted with 0.25 M potassium dihydrogen phosphate to pH 7.0). After 5 min, transformation to cyanmethemoglobin is complete at room temperature.

Glutathione peroxidase assay

GP activity was determined by a modified method of Paglia and Valentine (1967) [1] Activity was determined spectrophotometrically by coupling the oxidation of glutathione and NADPH using GR. Briefly, 1 mL of assay mixture contains optimized concentrations of the following chemicals: 0,5 M K_2HPO_4 (pH 7.0), 2,5 mM EDTA, 0,18 U/mL GR, 100 mM glutathione and 10 mM reduced NADPH and tissue extract (0,5 mL) was added in the spectrophotometer cuvette along with 0,1 mL of 60 mM cumene hydroperoxide, a suitable substrate for GP.

The mixture was placed into a 1 mL cuvette and read with Shimadzu UVPC 2100 spectrophotometer set at 366 nm at 37°C. The method optimization takes into account the functional data of GP complex:

- 1) the peroxilipid is reduced by GSH (reduced glutathione) to hydroxilipids (GP activity);
- 2) GSH is oxidized to GSSG (oxidized glutathione) (GP);
- 3) GSSG is reduced to GSH by NADPH (GR) as resumed in figure 3.

According to the cited figure 3[14], the increase of NADPH concentration from 2,5 mM [1] up to 10 mM also increases the velocity of GR and the GSH reserve levels, that are increased from 10 mM up to 100 mM, in such a way to always saturate GP activity. Cumene hydroperoxide concentration is also increased from 12 mM up to 60 mM so that lipid peroxidation is increased and GP activity therefore is limited only by GP levels in RBC membrane preparations. In each measurement of the enzyme activity the decrease of A_{366} was determined over a 2 min period. GP activity was standardised against Hb concentrations and expressed as NADPH mmol oxidized per minute per mg of hemoglobin (mmol/min/mg Hb). All chemicals were from Sigma Aldrich (St. Louis, MO).

Results

The GP activity is studied by spectrophotometrical analysis at least long lasting 20 s at 37°C, pH 7.0, wavelength 366 nm. In a first series of experiments, GP was determined at several final concentrations of GSH, and successively of NADPH, of GR and of cumene hydroperoxide in the described order. In Fig. 4A The time course of the GP

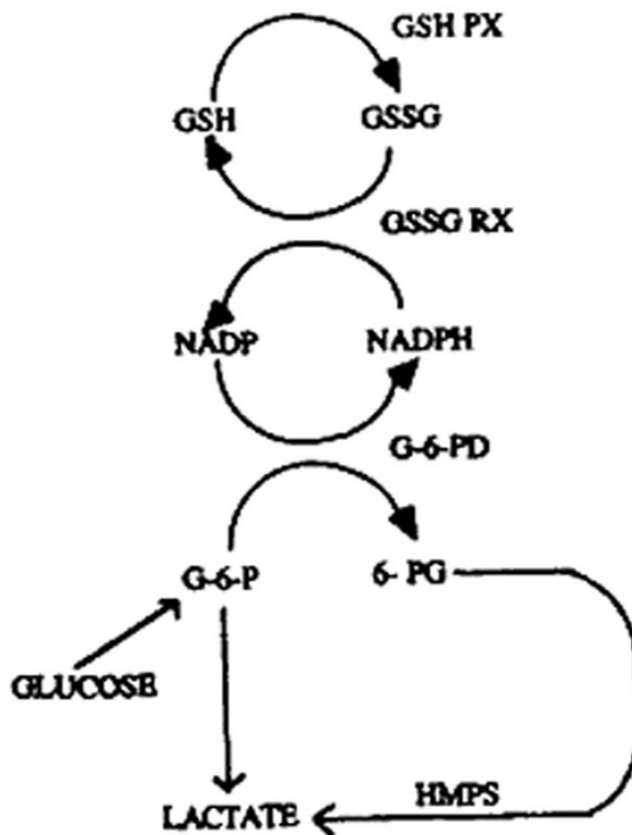


Figure 3
Reciprocal relationships among GP (= GSH PX), GR (= GSSG RX) and G-6-PD (= glucose-6-phosphate dehydrogenase) enzyme activities (18).

reaction according to Paglia and Valentine method prescriptions is described. In Fig. 4B is described a typical time course obtained after the optimization of previously cited reaction parameters. As evident in fig. 4B the absorbance of NADPH decreases linearly after at least for 20 s of observation in contrast to an almost constant absorbance of Fig. 4A. Thus does not allow to calculate an appreciable speed of NADPH oxidation of the cited reaction. In Fig. 5A is described the kinetics of GP activity of RBCs from 140 d old pregnant female rats at 18 d of pregnancy. The kinetics is slow and does not reach equilibrium within 20 s. In Fig. 5B is described the kinetics of GP activity of RBCs from 140 d nulligravid female rats. The reaction, in the conditions described in table 1, has a high V_i and is almost at equilibrium within 5 s. As described in table 2 the V_i in normal rats is about $135.30 \cdot 10^{-6}$ mol/s and $3.96 \cdot 10^{-6}$ mol/s in pregnant rats, that is one fiftieth of the reference activity.

Table 1: Optimal concentrations of Glutathione peroxidase reaction medium.

Content	Concentration
Potassium phosphate, containing 2,5 mM Na ₂ EDTA, 2,5 mM sodium azide, pH 7.0	0,5 M
Glutathione reductase (from baker yeast, ammonium sulfate suspension, 100–300 U/mg protein) in the same phosphate buffer;	0,18 U/ml: at 25°C
GSH (>98%) in distilled water	100 mM
NADPH (~95%) in 0,1% NaHCO ₃ solution	10 mM
Cumene hydroperoxide (>80%) in distilled water	60 mM

Discussion

The described revision of Paglia and Valentine [1] method to evaluate GP activity in RBCs membranes of mammalia must be optimized for the specific kind of samples studied. The modifications shall be devolved to obtain the stable function of studied enzyme activity under saturation conditions [15] Only in this instance the time course of absorbance of NADPH at 366 nm describes the real kinetic behaviour of GP catalized redox reaction. The principle has been applied by optimizing the concentrations of substrates and cofactors of both GR and GP activities in order to obtain that only GP is the limiting enzyme activity of our RBC enzyme complex system. GP-Activity and kinetics were measured at 13 mM, 10 mM e 7 mM GSH. (figure 6). The striking feature is that the time-courses are useful to screen between the three GSH concentrations. By using the scientific software SigmaPlot (derivative), Enzyme Kinetics, (kinetics) subroutine, and the statistic analysis on SigmaStat. To shorten the description, the use of NADPH at several concentrations is not described here, but was performed by the same statistical methods of analysis previously described for GP. Special attention should be applied to cumene peroxide concentration optimization, according to the short term stability of this reactant in laboratory environment conditions. Also the RBC membrane preparations show short term stability if not stored at 4°C and utilized within 24 hours. The NADPH absorbance data at 366 nm are interpolated according to Hofstee and Eadie [8,9] by derivative routine of SigmaPlot® scientific graph program. The optimized method was therefore applied to investigate in rats the effect of pregnancy on oxidative stress action in RBC

Table 2: Initial velocity of GPX complex activity in normal and gravid RBC membranes of 140 days old female rats (mean ± S.E. M. of eight independent experiments)

V _i (moles/sec) normal	V _i (moles/sec) gravid
135,30 10 ⁻⁶ ± 1,72 10 ⁻⁶	3,96 10 ⁻⁶ ± 0,83 10 ⁻⁶

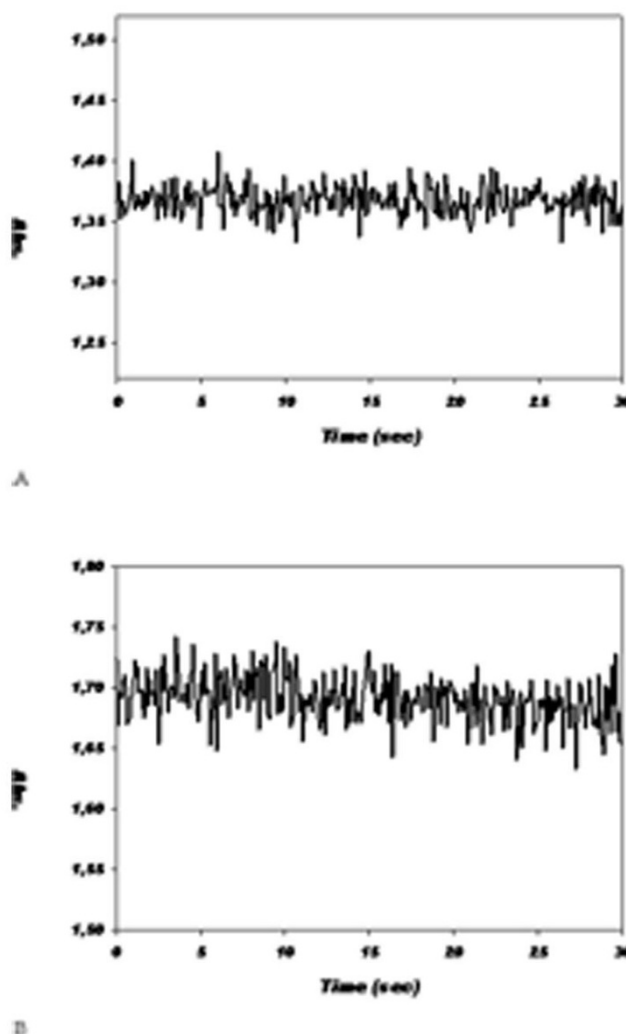


Figure 4
Effect of optimization of the buffer composition and enzyme substrates and cofactors concentrations. A according to the method of Paglia and Valentine. B after optimization of substrate and cofactor concentrations by experimental evaluation of the GP activity of hemolyzed rat RBC at 37°C.

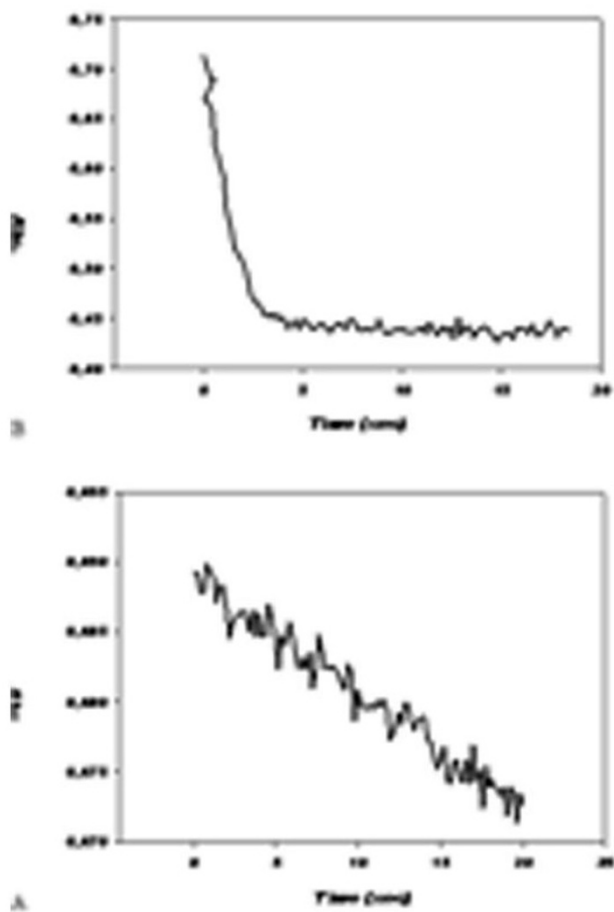


Figure 5
Comparison of typical GP kinetics of pregnant (A) and nulligravid (B) RBC GP activity at 37°C.

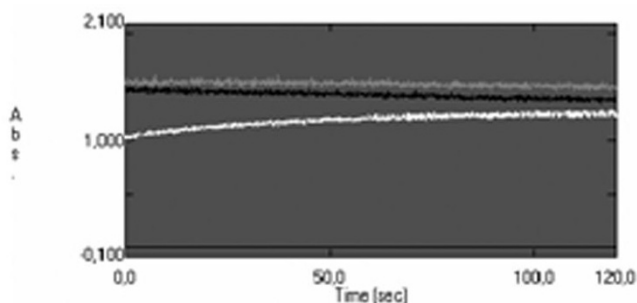


Figure 6
GP activity as function [GSH]. Each point is the mean of three independent determinations.

membranes as described by GP activity evaluation. As the GP activity was previously studied only in tissues such as rat liver and placenta without optimization of substrata conditions [7], the selection of blood as the target compartment to study the effect of systemic peroxide levels has the advantage of investigating the compartment subjected to all the comprehensive effects of peroxide systemic accumulation. In fact, data show the significant increase of GP activity during pregnancy in comparison to normal age paired nulligravid female rats. Such a clearcut increase confirms the working hypothesis that the adaptive reaction to oxidative stress in pregnancy includes the increase of GP enzyme antioxidant activity. In figures 5 and 6 the significance limit is set at $p < 0.05$ of results and is accomplished by two ways Student t, using SigmaStat® scientific statistical program.

Conclusion

The described results show that, after the optimization of enzyme kinetics measurement conditions, the GP activity of pregnant rats is clearly distinct by the GP activity of female age paired nulligravid animals.

This indeed is well in agreement with the metabolic increased oxidative metabolism of pregnant animals [16]. Moreover the hormonal rearrangement intrinsic of pregnancy [17] redistributes the interrelationships of metabolic pathways that sustain fetus growth and differentiation, particularly in rats, that have a short pregnancy (about 17 d).

Competing interests

The authors declare that they have no competing interests.

Authors' contributions

GG carried out GP method optimization and evaluation of GP activity in pregnancy. GM, director of research, carried out control of animal fertility, both kinetic and statistical analysis of spectroscopic data. All authors read and approved the final manuscript.

Acknowledgements

The work was partially supported by the Italian Ministry of University (MIUR).

References

1. Paglia DE, Valentine WN: **Studies on the quantitative and qualitative characterization of erythrocyte glutathione peroxidase.** *Lab Clin Med* 1967, **70**:158-169.
2. Mills GC: **Hemoglobin catabolism. I. Glutathione peroxidase, an erythrocyte enzyme which protects hemoglobin from oxidative breakdown.** *J Biol Chem* 1957, **229**(1):189-97.
3. Schulz TJ, Zarse K, Voigt A, Urban N, Birringer M, Ristow M: **Glucose restriction extends *Caenorhabditis elegans* life span by inducing mitochondrial respiration and increasing oxidative stress.** *Cell Metab* 2007, **6**(4):280-293.
4. Zarse K, Schulz TJ, Birringer M, Ristow M: **Impaired respiration is positively correlated with decreased life span in *Caenorhab-***

- ditis elegans models of Friedreich Ataxia.** *FASEB J* 2007, **21(4)**:1271-1275.
5. Ara C, Karabulut AB, Kirimlioglu H, Yilmaz M, Kirimlioglu V, Yilmaz S: **Protective effect of aminoguanidine against oxidative stress in an experimental peritoneal adhesion model in rats.** *Cell Biochem Funct* 2006, **24**:443-448.
 6. Jackson LW, Schisterman EF, Dey-Rao R, Browne R, Armstrong D: **Oxidative stress and endometriosis.** *Hum Reprod* 2005, **20(7)**:2014-2020.
 7. Vanderlelie JJ, Perkins AV: **Chronic nitric oxide synthase inhibition in pregnant rats does not result in placental oxidative stress.** *Hypertension Pregnancy* 2006, **25**:103-114.
 8. Eadie GS: **The inhibition of cholinesterase by physostigmine and prostigmine.** *J Biol Chem* 1942, **146**:85-93.
 9. Hofstee BHJ: **Specificity of esterases. I. identification of two pancreatic aliesterases.** *J Biol Chem* 1952, **199**:357-364.
 10. Chan SH, Tai MH, Li CY, Chan JY: **Reduction in molecular synthesis or enzyme activity of superoxide dismutases and catalase contributes to oxidative stress and neurogenic hypertension in spontaneously hypertensive rats.** *Free Radic Biol Med* 2006, **40(11)**:2028-2039.
 11. Zhan CD, Sindhu RK, Pang J, Ehdai A, Vaziri ND: **Superoxide dismutase, catalase and glutathione peroxidase in the spontaneously hypertensive rat kidney: effect of antioxidant-rich diet.** *J Hypertens* 2004, **22(10)**:2025-2033.
 12. Zhou JF, Wang XY, Shanguan XJ, Gao ZM, Zhang SM, Xiao WQ, Chen CG: **Increase oxidative stress in women with pregnancy-induced hypertension.** *Biomed Environ Sci* 2005, **18(6)**:419-426.
 13. Krishna Mohan S, Venkataramana G: **Status of lipid peroxidation, glutathione, ascorbic acid, vitamin E and antioxidant enzymes in patients with pregnancy – induced hypertension.** *Indian J Physiol Pharmacol* 2005, **51(3)**:284-288.
 14. Tanphaichitr VS, Pung-amrit P, Yodthong S, Soongswang J, Mahasandana C, Suvatte V: **Glucose-6-phosphate dehydrogenase deficiency in the newborn: its prevalence and relation to neonatal jaundice.** *Southeast Asian J Trop Med Public Health* 1995, **26(Suppl 1)**:137-141.
 15. Walker TA, Jonak ZL, Worsham LMS, Ernst-Fonberg ML: **Kinetic studies of the fatty acid synthetase multienzyme complex from *Euglena gracilis* variety *bacillaris*.** *Biochem J* 1981, **199**:383-392.
 16. Hawk SN, Lanoue L, Keen CL, Kwik-Urbe CL, Rucker RB, Uriu-Adams JY: **Copper-deficient rat embryos are characterized by low superoxide dismutase activity and elevated superoxide anions.** *Biol Reprod* 2003, **68(3)**:896-903.
 17. Carr BR, Parker CR Jr, MacDonald PC, Simpson ER: **Metabolism of high density lipoprotein by human fetal adrenal tissue.** *Endocrinology* 1980, **107(6)**:1849-1854.
 18. **Healthcare and Laboratory Diagnostic Information** [<http://www.thailabonline.com>]

Publish with **BioMed Central** and every scientist can read your work free of charge

"BioMed Central will be the most significant development for disseminating the results of biomedical research in our lifetime."

Sir Paul Nurse, Cancer Research UK

Your research papers will be:

- available free of charge to the entire biomedical community
- peer reviewed and published immediately upon acceptance
- cited in PubMed and archived on PubMed Central
- yours — you keep the copyright

Submit your manuscript here:
http://www.biomedcentral.com/info/publishing_adv.asp

