

Research

Open Access

## Phospholipase A2 regulation of bovine endometrial (BEND) cell prostaglandin production

James D Godkin\*<sup>1</sup>, Mary P Roberts<sup>1</sup>, Mona Elgayyar<sup>2</sup>, Wei Guan<sup>2</sup> and Patricia K Tithof<sup>2</sup>

Address: <sup>1</sup>Department of Animal Science, The University of Tennessee, Knoxville, TN, USA and <sup>2</sup>The University of Tennessee College of Veterinary Medicine, Department of Pathology, Knoxville, TN, USA

Email: James D Godkin\* - [jgodkin@utk.edu](mailto:jgodkin@utk.edu); Mary P Roberts - [mrobert5@utk.edu](mailto:mrobert5@utk.edu); Mona Elgayyar - [melgayyar@utk.edu](mailto:melgayyar@utk.edu); Wei Guan - [wguan@utk.edu](mailto:wguan@utk.edu); Patricia K Tithof - [ptithof@utk.edu](mailto:ptithof@utk.edu)

\* Corresponding author

Published: 23 September 2008

Received: 10 July 2008

*Reproductive Biology and Endocrinology* 2008, **6**:44 doi:10.1186/1477-7827-6-44

Accepted: 23 September 2008

This article is available from: <http://www.rbej.com/content/6/1/44>

© 2008 Godkin et al; licensee BioMed Central Ltd.

This is an Open Access article distributed under the terms of the Creative Commons Attribution License (<http://creativecommons.org/licenses/by/2.0>), which permits unrestricted use, distribution, and reproduction in any medium, provided the original work is properly cited.

### Abstract

**Background:** Prostaglandins (PG), produced by the uterine endometrium, are key regulators of several reproductive events, including estrous cyclicity, implantation, pregnancy maintenance and parturition. Phospholipase A2 (PLA2) catalyzes the release of arachidonic acid from membrane phospholipids, the rate-limiting step in PG biosynthesis. The bovine endometrial (BEND) cell line has served as a model system for investigating regulation of signaling mechanisms involved in uterine PG production but information concerning the specific PLA2 enzymes involved and their role in regulation of this process is limited. The objectives of this investigation were to evaluate the expression and activities of calcium-dependent group IVA (PLA2G4A) and calcium-independent group VI (PLA2G6) enzymes in the regulation of BEND cell PG production.

**Methods:** Cells were grown to near-confluence and treated with phorbol 12, 13 dibutyrate (PDBu), interferon-tau (IFNT), the PLA2G4A inhibitor pyrrolidine-1 (PYR-1), the PLA2G6 inhibitor bromoenol lactone (BEL) and combinations of each. Concentrations of PGF2alpha and PGE2 released into the medium were determined. Western blot analysis was performed on cellular protein to determine effects of treatment on expression of PLA2G4A, PLA2G6 and PLA2G4C. PLA2 assays were performed on intact cells by measuring arachidonic acid and linoleic acid release and group-specific PLA2 activity assays were performed on cell lysates.

**Results:** BEND cells produced about 10-fold more PGE2 than PGF2alpha under resting conditions. Production of both PGs increased significantly in response to PDBu-stimulation. PYR-1 significantly diminished production of both PGs by resting cells and abolished the stimulatory effect of PDBu. BEL stimulated production of both PGs. IFNT reduced both PGE2 and PGF2alpha production by resting cells and diminished PDBu stimulation of PG production. Conversely, IFNT did not significantly reduce BEL stimulation of PG production. Cellular expression of PLA2G4A was enhanced by PDBu and this response was diminished by IFNT. Expression of PLA2G6 was not observed to be affected by treatments and no PLA2G4C expression was observed. Arachidonic acid release from intact cells was significantly increased by PDBu and this effect was attenuated by PYR-1 but not by BEL. Release of linoleic acid from intact cells was stimulated by PDBu and inhibited by BEL but not PYR-1. Group specific PLA2-activity assays demonstrated both PLA2G4A and PLA2G6 activity.

**Conclusion:** Results from this study demonstrate that PGE2 and PGF2-alpha production by BEND cells is mediated by the activity and expression of PLA2G4A. Interferon-tau treatment diminished expression of PLA2G4A and PG production. BEND cells were shown to express PLA2G6 but, unlike primary or early passage luminal bovine endometrial cells, stimulation of PLA2G6 activity was not associated with increased PG production.

## Background

Prostaglandins, produced by the endometrial epithelium, are important regulators of several reproductive processes, including estrous cyclicity, implantation, pregnancy maintenance and parturition [1]. Prostaglandin (PG) biosynthesis is dependent on arachidonic acid (AA) release from membrane phospholipids catalyzed by phospholipase A<sub>2</sub> enzymes [reviewed in [2]]. Arachidonic acid is then metabolized to intermediate products, PGG<sub>2</sub> and PGH<sub>2</sub>, by a cyclooxygenase reaction and by a peroxidase reaction, respectively, both performed by cyclooxygenase (COX) -1 and/or -2. Prostaglandin H<sub>2</sub> is converted to bioactive prostaglandins, such as PGF<sub>2α</sub>, PGE<sub>2</sub>, PGD<sub>2</sub> and PGI<sub>2</sub>, by terminal PG synthases, which may exhibit tissue specific distribution [3].

Bovine and ovine endometrial explants and epithelial cell cultures have proven to be functional models for analysis of pathways that regulate PG biosynthesis. Early studies used endometrial explants [4,5] or glandular endometrial epithelial cells [5-7] harvested from animals at late diestrus. More recent studies have utilized primary or early passage luminal epithelial (LE) cells collected from animals early in the cycle (days 1-4) because the luminal epithelium is the major site of endometrial PG production and these cells exhibit much better growth characteristics than LE cells collected during diestrus [8-11]. Results from experiments with explants and glandular or luminal epithelial cells are consistent; oxytocin stimulates PGF<sub>2α</sub> and PGE<sub>2</sub> production and interferon-tau (IFNT) diminishes this response. Bovine endometrial epithelial cells produce greater quantities of PGF<sub>2α</sub> than PGE<sub>2</sub> and the PGF<sub>2α</sub> response to oxytocin stimulation is stronger. The cellular response to IFNT, alone, is biphasic. Low concentrations (< 1 µg/ml) of IFNT diminish basal PG production and high concentrations (>1 µg/ml) stimulate PG production [10]. Interestingly, both low and high concentrations of IFNT diminish oxytocin stimulated PG production. Agonist-stimulated PG production, by oxytocin or high concentrations of IFNT, is associated with increased expression of COX-2 mRNA and protein [9,10], prostaglandin E<sub>2</sub> synthase (PGES) [10], and prostaglandin F<sub>2α</sub> synthase (PGFS) mRNA [11]. Attenuation of oxytocin-stimulated PGF<sub>2α</sub> production is associated with decreased COX-2 production [9,10] and alteration in the expression of terminal PGF synthase [11].

Numerous studies on the regulation of PG biosynthesis have been performed with the BEND, the bovine endometrial cell line [reviewed in [12]]. BEND cells have been described as spontaneously immortalized endometrial cells originally isolated from a cow on day 14 of the cycle [13]. They have been described to have both epithelial-like [12,13] and stromal-like [14] morphological characteristics. BEND cells produce significantly more (10-20

fold) PGE<sub>2</sub> than PGF<sub>2α</sub> under both resting and stimulated conditions, and they respond to phorbol ester (phorbol 12-myristate 13-acetate, PMA, or phorbol 12,13 dibutyrate, PDBu) stimulation, but not oxytocin stimulation, with increased PG production [12,14,15]. Similar to primary endometrial epithelial cells, BEND cells increase expression of COX-2 mRNA [16], protein and PGFS [15] when PG production is stimulated and these responses are diminished by IFNT at concentration less than 5 µg/ml [15]. Unlike primary endometrial epithelial cells, BEND cells are not stimulated to produce PGs by high levels of IFNT alone and when treated with both PDBu and high levels of IFNT (>5-20 µg/ml) inhibitory activities of IFNT on PG production are ameliorated [15].

Despite the fact that phospholipase A<sub>2</sub> (PLA<sub>2</sub>) catalyzes the release of arachidonic acid, the rate-limiting step in PG biosynthesis, most studies on the regulation of uterine PG production have focused on expression and activation of downstream enzymes such as cyclooxygenases, which catalyze the committed step, and PG synthases. The reports [6,9,16] that have included analysis of PLA<sub>2</sub> expression in domestic ruminant uterine PG production, focused on a single enzyme, cPLA<sub>2α</sub> (Group IVA PLA<sub>2</sub> or PLA2G4A). Interestingly, while none of these studies identified consistent significant changes in expression of protein or mRNA for PLA2G4A in association with alterations in PG production, non-specific PLA<sub>2</sub> inhibitors significantly diminished basal and agonist-induced PG production [6,9,17].

Mammalian PLA<sub>2</sub>s constitute a growing family of enzymes, currently containing about 20 members, that catalyze hydrolysis of fatty acids from the *sn*-2 position of phospholipids with the concomitant formation of lysophospholipid [18]. Based largely on structural and enzymatic properties, PLA<sub>2</sub>s have been grouped into four main subfamilies: low molecular weight secretory PLA<sub>2</sub>s (PLA2 Groups 1-3, 5, 10 and 12); cytosolic PLA2G4; calcium independent PLA2G6; and platelet activating factor (PAF) acid hydrolases (PLA2G7 and PLA2G8). The intracellular PLA2G4 and PLA2G6 enzymes are of particular interest in the regulation of uterine PG biosynthesis because their sites of action are the perinuclear membranes where downstream AA metabolizing enzymes reside.

Recently, we characterized PLA2G4A, PLA2G4C and PLA2G6 activity and expression in early passage bovine luminal endometrial epithelial cells [19]. It was observed that oxytocin stimulation of PGF<sub>2α</sub> production was associated with increased expression and activity of PLA2G6 and IFNT diminished these responses. In addition, the PLA2G6 inhibitor, bromoenol lactone (BEL), abolished oxytocin stimulation of PGF<sub>2α</sub> production. Results indicated that oxytocin stimulation of endometrial PGF<sub>2α</sub> pro-

duction is mediated, at least in part, through activation of PLA2G6.

Both BEND cells and primary cultures of endometrial epithelial cells have served as models for regulation of uterine prostaglandin biosynthesis and the mechanism by which IFNT modifies this process. Physiological differences between the two cell types have been identified [14]. The objective of the present study was to determine the role of PLA<sub>2</sub> enzymes in BEND cell PG production and relate these results to the reported differences between BEND cells and primary endometrial epithelial cells.

## Methods

BEND cells were a generous gift from Dr. T. Hansen (Colorado State University, Ft Collins) and are commercially available from American Type Culture Collection (ATCC no. CRL-2398, Manassas, VA). Dulbecco minimum essential medium (MEM), Ham's F-12, Hanks' balanced salt solution (HBSS), gentamicin, oxytocin, PDBu, bovine serum albumin, fetal bovine serum, horse serum, aprotinin, leupeptin and pepstatin were from Sigma Chemical Co (St Louis, MO). Enzyme Immunoassay kits for PGE<sub>2</sub> (catalog no. 900-001) and PGF<sub>2α</sub> (catalog no. 901-069) were from Assay Designs, Inc (Ann Arbor, MI). 1-palmitoyl-2-(1-<sup>14</sup>C) arachidonyl-phosphatidylcholine (<sup>14</sup>C-AA-PC), 1-palmitoyl-2-(1-<sup>14</sup>C) linoleoyl-phosphatidylcholine (<sup>14</sup>C-LA-PC), <sup>3</sup>H-arachidonic acid and <sup>3</sup>H-linoleic acid were from American Radiolabeled Chemicals, (St. Louis, MO). Group IVA PLA<sub>2</sub> antibody (SC-454) was from Santa Cruz Biotechnology, Inc (Santa Cruz, CA), Group VI PLA<sub>2</sub> antibody (Anti-iPLA<sub>2</sub>, #07-169) was from Upstate Cell Signaling Solutions (Lake Placid, NY) and the anti-Group IVC was a gift from Dr. C.C. Leslie (University of Colorado, Boulder, CO). Recombinant ovine IFNT (antiviral activity, 1 × 10<sup>8</sup> U/mg) was donated kindly by Dr. F.W. Bazer (Texas A&M University, College Station, TX). Pyrrolidine-1 (PYR-1) was a generous gift of Dr. Michael Gelb (University of Washington, Seattle WA). Tissue culture plastic wares were from Becton Dickinson and Co. (Franklin Lakes, NJ). Unless noted otherwise, additional chemicals were from Sigma Chemical Corp.

## Cell culture

BEND cells were cultured and propagated by the method described by Staggs, et al. [13], with modest modifications. Briefly, cells were seeded into tissue culture dishes of the appropriate size for each experiment (see below) at a concentration of 0.5 × 10<sup>5</sup> cells per ml in culture medium (40% Ham's F-12, 40% MEM, 200 U insulin/L, 50 μg gentamicin, 10% FBS, 10% horse serum) at 37 °C in a humidified atmosphere of 95% air and 5% CO<sub>2</sub> and culture medium was changed every other day. For all experiments, cells were grown to 80–90% confluence before application of treatments which were applied in triplicate

and each experiment was repeated (n = 6) unless noted otherwise.

## PG assays

Cells were grown in 6-well plates, washed three times with HBSS and cultured for 6 h in unsupplemented Ham's F-12/MEM with the following treatments: vehicle control, PDBu (100 ng/ml), IFNT (50 ng/ml), the PLA2G6 inhibitor BEL (7.5 μM), the group PLA2G4A inhibitor PYR-1 (0.4 μM), PDBu + IFNT, PDBu + BEL, IFNT + BEL, PDBu + PYR-1. Vehicles, Ham's F-12/MEM for IFNT, and DMSO for PDBu and the inhibitors, were added to each well. At the end of the incubation period, medium was harvested and stored frozen at -200 C. Prostaglandin F2α and E2 assays were performed with enzyme immunoassay kits from Assay Designs, Inc., according to supplier's instructions. Inter- and intraassay coefficients of variation (n = 12) were 9% and 11%, respectively.

## Western blot analysis

Western blot analysis was performed as described previously [20]. Briefly, cells were grown in 60 mm dishes and treated with vehicle (control), PDBu and IFNT (50 ng and 1000 ng), alone and in combination for 6 h as described above. Cells were lysed in RIPA buffer (50 mM Tris-HCl, 150 mM NaCl, 1% SDS, 0.5% sodium deoxycholate, 1 mM DTT, 100 μM PMSF, 1% NP-40), and 1 × protease inhibitor cocktail (Roche Applied Science, Indianapolis, IN). Lysates from triplicate treatment wells were combined, sonicated and centrifuged (10,000 g, 20 minutes) and supernatants were subjected to 10% SDS-polyacrylamide gel electrophoresis and transferred onto nitrocellulose membranes. Non-specific binding sites were blocked with 5% non-fat dry milk and membranes were incubated with antibodies to PLA2G4A, PLA2G4C, and PLA2G6 in 1:800, 1:400 and 1:1000 dilutions, respectively, overnight at 4 °C. Membranes were rinsed 3 times and protein bands were visualized by enhanced chemiluminescence (Amersham Biosciences, Arlington Heights, IL). A blot was prepared from each of the replicated experiments.

## <sup>3</sup>H-arachidonic acid and <sup>3</sup>H-linoleic acid released from intact cells

Intact cell PLA<sub>2</sub> assays were performed on cells prelabeled for 24 h with either <sup>3</sup>H-arachidonic acid (<sup>3</sup>H-AA; 0.25 μCi/ml) or <sup>3</sup>H-linoleic acid (<sup>3</sup>H-LA, 0.25 μCi/ml). Cells were washed three times with Hank Balanced Salt Solution (HBSS), equilibrated for 45 min and treatments applied for 1 hr. Cells were treated with 100 ng/ml PDBu in the presence and absence of 7.5 μM BEL or 0.4 μM PYR-1. Inhibitors were added 10 minutes prior to treatment with PDBU. Medium and lysed cells were harvested separately and % of total radioactivity released into the medium determined by scintillation counting.

**PLA<sub>2</sub> activity in cellular homogenates**

PLA<sub>2</sub> assays were performed as described previously [20]. Briefly, cells were washed and treated with either the PLA<sub>2</sub>G4A inhibitor, PYR-1 (0.4 μM) or the PLA<sub>2</sub>G6 inhibitor BEL (7.5 μM) for 3 hours. At the end of the incubation period, cells were washed with Ca<sup>++</sup>-free PBS containing 5 mM EGTA and 1 mM PMSF, lysed in homogenizing buffer (50 mM Tris HCl, pH 7.4, 0.5 mM dithiothreitol, 20% glycerol, 1 μg/ml leupeptin, 10 μg/ml aprotinin, 1 mM phenylmethylsulfonylchloride) and sonicated two times for 10 seconds on ice. The substrates 1-palmitoyl-2-[arachidonoyl] phosphatidylcholine (cold AA-PC) and 1-palmitoyl-2-[arachidonoyl-1-<sup>14</sup>C] phosphatidylcholine (<sup>14</sup>C-AA-PC) or 1-palmitoyl-2-[linoleoyl] phosphatidylcholine (cold LA-PC), 1-palmitoyl-2-[linoleoyl-1-<sup>14</sup>C] phosphatidylcholine (<sup>14</sup>C-LA-PC) were used to assay for PLA<sub>2</sub> activity. The substrates were dried under nitrogen and resuspended by sonication in assay buffer (10 mM Hepes, pH 7.5) to a final optimum concentration of cold to radiolabeled substrate as determined previously. Calcium-dependent activity (primarily PLA<sub>2</sub>G4A) assays were performed with AA-PC and <sup>14</sup>C-AA-PC in the presence of 5 mM CaCl<sub>2</sub> and calcium-independent activity (primarily PLA<sub>2</sub>G6 and PLA<sub>2</sub>G4C) assays were performed using the same substrates but in the absence of CaCl<sub>2</sub> and the presence of EGTA (5 mM). Assays optimized for identification of PLA<sub>2</sub>G6 utilized LA-PC and <sup>14</sup>C-LA-PC in both the presence and absence of Ca<sup>++</sup> and presence of 400 μM Triton-X and 0.8 mM ATP which enhance the activity of this enzyme [29]. Experiments were terminated by addition of chloroform-methanol, 2:1 (v/v), the chloroform layer was extracted and lipids separated by thin-layer chromatography (hexane: diethyl ether: glacial acetic acid, 7:3:0.2). Lipids were visualized with I<sub>2</sub> vapor, the zones corresponding to fatty acid and phospholipids were excised and radioactivity determined by scintillation counting.

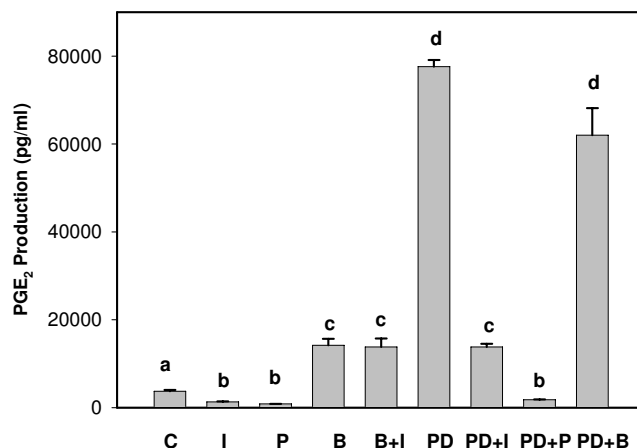
**Statistical analysis**

Data for PG production and PLA<sub>2</sub> activity are presented as means +/- SEM and subjected to least squares analysis of variance using the general linear models procedure of the Statistical Analysis System (SAS Institute, Cary, NC). Sources of variance included experiments, treatments and their interactions. Individual comparisons of means were made using Student-Neuman-Keuls test in which the independent variables were the treatments and the dependent variables were the levels of PG or PLA<sub>2</sub> activity produced. Differences were considered statistically significant when p < 0.05.

**Results**

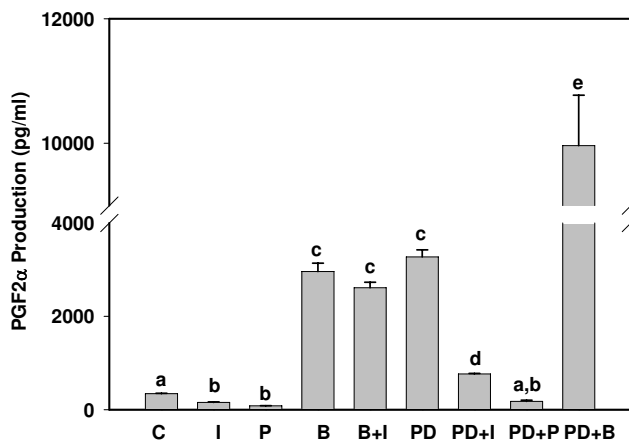
**Prostaglandin production**

Production of PGE<sub>2</sub> and PGF<sub>2α</sub> are illustrated in Figures 1 and 2, respectively. BEND cells produced about 10-fold



**Figure 1**  
**Prostaglandin E<sub>2</sub> production by BEND cells.** Cell culture medium was harvested 6 h after addition of treatments and concentrations of PGE<sub>2</sub> were analyzed by ELISA. Treatments included: Control (C), IFNT (I), Pyrrolodine-I (P), Bromoenol lactone (B), B + I, Phorbol 12, 13 dibutyrate (PD), PD + I, PD + P and PD + B. Treatments were performed in triplicate and repeated (n = 6). Data are expressed as means +/- SEM. Columns with different superscripts are significantly different (p < 0.05).

more PGE<sub>2</sub> than PGF<sub>2α</sub> under resting conditions. Production of both PGs increased significantly (10- to 20-fold) in

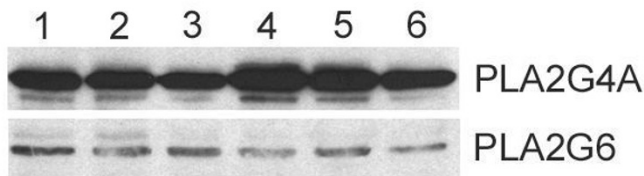


**Figure 2**  
**Prostaglandin F<sub>2α</sub> production by BEND cells.** Cell culture medium was harvested 6 h after addition of treatments and concentrations of PGF<sub>2α</sub> were analyzed by ELISA. Treatments included: Control (C), IFNT (I), Pyrrolodine-I (P), Bromoenol lactone (B), B + I, Phorbol 12, 13 dibutyrate (PD), PD + I, PD + P and PD + B. Treatments were performed in triplicate and repeated (n = 6). Data are expressed as means +/- SEM. Columns with different superscripts are significantly different (p < 0.05).

response to PDBu stimulation, which had a greater effect on PGE<sub>2</sub> production. PYR-1, the PLA2G4A inhibitor, significantly diminished production of both PGs by resting cells and abolished the stimulatory effect of PDBu. Interestingly, BEL, the PLA2G6 inhibitor, stimulated production of both PGs in control cells and PGF<sub>2α</sub> release in PDBu-treated cells. IFNT reduced both PGE<sub>2</sub> and PGF<sub>2α</sub> production from resting cells and diminished PDBu stimulation of PG production. Conversely, IFNT did not significantly reduce BEL stimulation of PG production.

**PLA<sub>2</sub> protein expression**

Western blot analysis of cellular proteins from BEND cells demonstrated that the PLA2G4A antibody recognized a protein that migrated at ~110 kD and a very minor protein of slightly less mass (~107 kD) that may have been a breakdown product (Figure 3, top). The PLA2G6 antibody cross-reacted with a protein that migrated at ~85 kD (Figure 3, bottom). The PLA2G4C antibody did not detect any major protein bands (not shown). Two isoforms of PLA2G6 were identified, a major band at 85 kD and a minor band of slightly greater mass (~88 kD). Similar results have been observed previously and are likely the result of alternative splicing of the PLA2G6 transcript resulting in multiple isoforms of the enzyme. Cells were treated for 6 h with vehicle (control, lane 1), IFNT (50 ng/ml, lane 2), IFNT (1000 ng/ml, lane 3), PDBu (lane 4), PDBu plus IFNT (50 ng/ml, lane 5) or PDBu plus IFNT (1000 ng/ml, lane 6) to determine effects of treatments on PLA<sub>2</sub> isoform expression. As illustrated in the representative Figure 3, IFNT, alone, had little effect on expression of PLA2G4A when compared to control. In contrast PDBu stimulated PLA2G4A expression and IFNT, when combined with PDBu, diminished the stimulatory effect. Conversely, treatments had little effect on expression of PLA2G6.



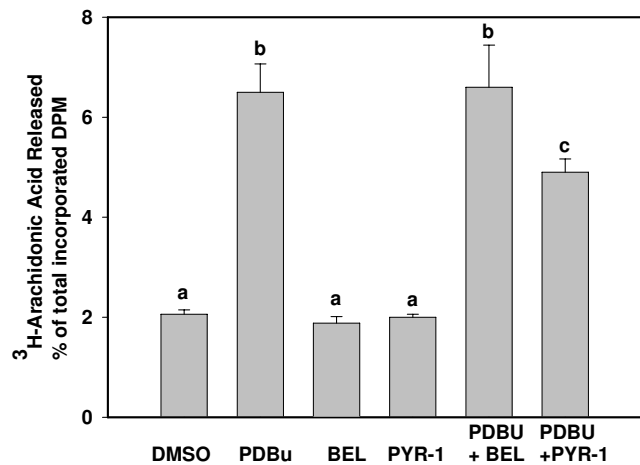
**Figure 3**  
**BEND cell expression of PLA2G4A and PLA2G6.**  
BEND cells were treated for 6 h with vehicle (control, lane 1) 50 ng IFNT (lane 2), 1000 ng IFNT (lane 3), PDBu (lane 4), PDBu + 50 ng IFNT (lane 5) or 1000 ng IFNT + PDBu (lane 6). Western blot analyses were performed on cellular proteins using antibodies against A, PLA2G4A and B, PLA2G6 as described in Methods.

**<sup>3</sup>H-arachidonic acid release and PLA<sub>2</sub> activity assays**

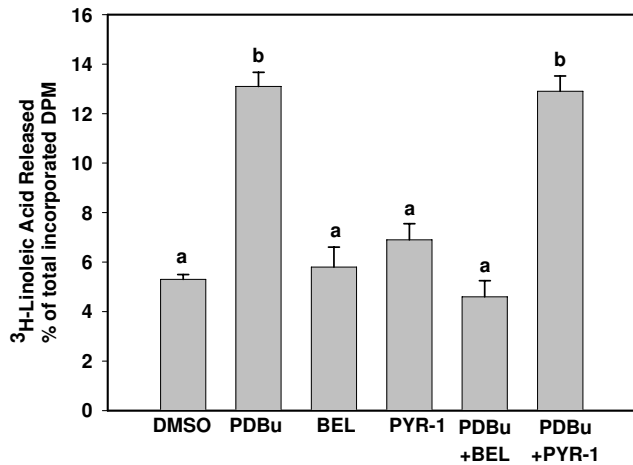
Release of incorporated <sup>3</sup>H-arachidonic acid and <sup>3</sup>H-linoleic acid were used as measures of PLA<sub>2</sub> activity in intact cells because PLA2G4A is selective for arachidonic acid, whereas PLA2G6 is non-selective and will cleave both arachidonic acid and linoleic acid from membrane phospholipids. As can be seen in Figure 4, PDBu induced significant release of <sup>3</sup>H-arachidonic acid when compared to DMSO control. This effect was attenuated by the Group IVA PLA<sub>2</sub> inhibitor PYR-1, but not by the Group VI inhibitor, BEL. In contrast, PYR-1 had no effect on PDBu stimulation of <sup>3</sup>H-linoleic acid release (Figure 5) but BEL inhibited this action.

As can be seen in Figure 6, BEND cells exhibited significant PLA<sub>2</sub> activity from cell lysates when <sup>14</sup>C-PC-AA was used as a substrate both in the presence or absence of calcium; however, PLA<sub>2</sub> activity was significantly greater in the presence of calcium than in all other groups. The PLA2G4A inhibitor, PYR-1, returned values to baseline in both the presence or absence of calcium.

Cellular lysates also exhibited significant PLA<sub>2</sub> activity when <sup>14</sup>C-PC-LA was used as a substrate and this activity was not different in the presence or absence of calcium (Figure 7). The PLA2G6 inhibitor, BEL, attenuated activity in the presence of calcium and in the presence of EGTA.



**Figure 4**  
**Arachidonic acid release by BEND cells.** <sup>3</sup>H-arachidonic acid (0.25 μCi/ml) was applied to cells for 24 h, cells were washed and treated for one h with vehicle (C, control), Phorbol 12,13 dibutyrate (PD), Bromoenol lactone (B), Pyrrolidine-1 (P), PD + B or PD + P. Medium and lysed cells were harvested separately and % of total radioactivity released into the medium determined by scintillation counting. Treatments were performed in triplicate and repeated (n = 6). Data are expressed as means +/- SEM. Columns with different superscripts are significantly different (p < 0,05).

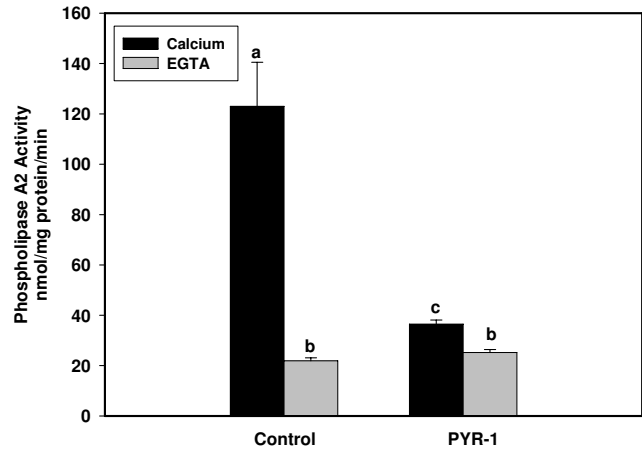


**Figure 5**  
**Linoleic acid release by BEND cells.** <sup>3</sup>H-linoleic acid (0.25 μCi/ml) was applied to cells for 24 h, cells were washed and treated for one h with vehicle, (C, control), Phorbol 12,13 dibutyrate (PD), Bromoenol lactone (B), Pyrrolodine-1 (P), PD + B or PD + P. Medium and lysed cells were harvested separately and % of total radioactivity released into medium determined by scintillation counting. Treatments were performed in triplicate and repeated (n = 6). Data are expressed as means +/- SEM. Columns with different superscripts are significantly different (p < 0.05).

**Discussion**

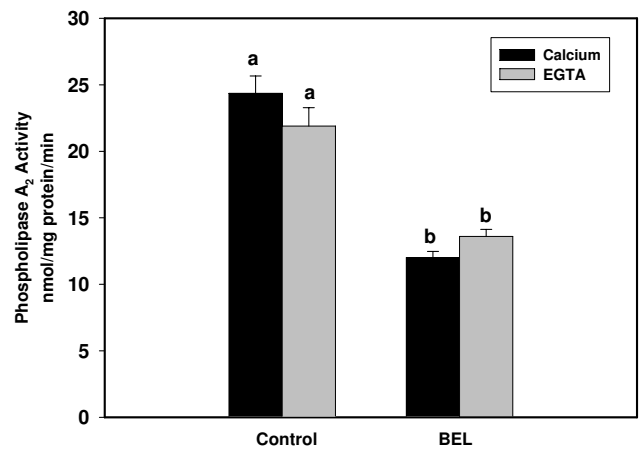
The results from this investigation strongly indicate that PLA2G4A is the enzyme that liberates arachidonic acid for PG biosynthesis in BEND cells. In addition, the results suggest that stimulation of PG production is regulated at the level of PLA2G4A activity and expression. Several lines of evidence support the concept that PG production is regulated by PLA2G4A in BEND cells. One, the PLA2G4A inhibitor PYR-1, significantly diminished basal PG production and abolished PDBu stimulation of PG production and <sup>3</sup>H-AA release from intact cells. Two, stimulation of PG production by PDBu was associated with increased expression and activity of PLA2G4A. Three, the predominant PLA<sub>2</sub> activity in BEND cell lysates was calcium-dependent. Also, BEND cells demonstrated significantly more activity when <sup>14</sup>C-PC-AA was used as a substrate when compared to <sup>14</sup>C-PC-LA, suggesting that the predominant isoform active in these cells is arachidonoyl-selective, a characteristic of PLA2G4A. Finally, reduction of PG production by IFNT was associated with diminished PLA2G4A expression.

In addition to the demonstrated PLA2G4A activity, BEND cells exhibited considerable PLA2G6 activity. The use of <sup>14</sup>C-PC-LA as a substrate, showed activity was not different in the presence or absence of calcium, consistent with calcium-independent activity. This activity was inhibited by



**Figure 6**  
**PLA<sub>2</sub> activity assays using AA-PC as substrate.** Ca<sup>++</sup>-dependent PLA<sub>2</sub> activity assays were performed on cellular lysates with AA-PC and <sup>14</sup>C-AA-PC in the presence of 5 mM CaCl<sub>2</sub> and Ca<sup>++</sup>-independent assays were performed using the same substrate but in the absence of Ca<sup>++</sup> and the presence of 5 mM EGTA. Columns with different superscripts are significantly different (p < 0.05). The PLA2G4A inhibitor, pyrroline-1 (PYR-1) inhibited Ca<sup>++</sup>-dependent activity.

BEL, suggesting activity of a PLA2G6 isoform. Similarly, BEL, but not PYR-1, inhibited incorporated <sup>3</sup>H-linoleic acid release from intact cells. However, BEL was not inhib-



**Figure 7**  
**PLA<sub>2</sub> activity assays using LA-PC as substrate.** Ca<sup>++</sup>-dependent activity assays were performed on cellular lysates with LA-PC and <sup>14</sup>C-LA-PC in the presence of 5 mM CaCl<sub>2</sub> and Ca<sup>++</sup>-independent assays were performed using the same substrate but in the absence of Ca<sup>++</sup> and the presence of 5 mM EGTA. Columns with different superscripts are significantly different (p < 0.05). The PLA2G6-inhibitor, bromoenol lactone (BEL), was inhibitory to PLA<sub>2</sub> activity toward LA-PC.

itory to BEND cell PG synthesis, an indication that PLA2G6 activation does not promote PG production in these cells. PLA2G6 has been shown to be involved in maintaining membrane homeostasis in some cell types [18] and it is feasible that it plays a similar role in BEND cells. Interestingly, inhibition of PLA2G6 activity with BEL resulted in increased production of both PGF<sub>2α</sub> and PGE<sub>2</sub> and BEL was synergistic with PDBu in promoting production of PGF<sub>2α</sub>. In previous studies with primary or early passage luminal endometrial cells, we observed that BEL stimulated PGE<sub>2</sub> production and inhibited PGF<sub>2α</sub> production [19]. Whereas BEND cell PGF<sub>2α</sub> and PGE<sub>2</sub> production appears to be mediated by PLA2G4A, oxytocin-stimulated luminal endometrial cell PGF<sub>2α</sub> production was associated with activation of PLA2G6. In BEND cells, inhibition of PLA2G6 activity by BEL may result in greater concentrations of phospholipid substrate available for hydrolysis by PLA2G4A resulting in increased production of both PGF<sub>2α</sub> and PGE<sub>2</sub>.

Several studies have used BEND cells as a model system for investigation of signaling mechanisms involved in uterine cell PG production and IFNT inhibition of this process [reviewed in [12]]. Based on results from these studies, it was concluded that phorbol ester-stimulation of PG production and reduction of this effect, by IFNT, was mediated by positive and negative regulation of COX-2 expression. For example, Binelli et al. [16] reported that activation of the protein kinase C (PKC) pathway with PDBu increased COX-2 expression and PGF<sub>2α</sub> production. Pru et al. [23] observed that PDBu treatment stimulated COX-2 mRNA expression within 30–60 minutes, while COX-2 protein and PG production increased at 3 hr. Co-treatment of cells with IFNT and PDBu results in diminished COX-2 mRNA, COX-2 protein and PG production. One study [16] observed that PDBu tended to increase ( $p < 1.0$ ) PLA<sub>2</sub> protein expression and IFNT tended to diminish this response, but only after 12 hours of culture, but PLA<sub>2</sub> activity was not evaluated. In the present study, we observed an increase in PLA<sub>2</sub> at 6 hours, the only time point tested, and maximal rate of increase in PLA<sub>2</sub> activity at 3 hours. In preliminary studies, an hourly time course of PLA<sub>2</sub> activity was performed (not shown) and significant increases were observed in the first hour reaching a maximum rate of increase at 3 hours. These results indicate that increases in PLA<sub>2</sub> activity in response to PDBu is an early response, while the increase in PLA<sub>2</sub> expression is a delayed response. Based on these, and previous results [19], it is suggested that uterine PG production is regulated, at least in part, at the level of PLA<sub>2</sub> activity and expression.

Stimulation of BEND cells with PDBu results in the phosphorylation and activation of several components of mitogen activated protein kinase (MAPK) pathways

[23,24]. It is well established in a variety of cell types that MAPKs phosphorylate and activate PLAG4A resulting in arachidonic acid release [2]. Arachidonic acid, in addition to being the major prostaglandin precursor, can act as a signaling molecule and affects intracellular Ca<sup>++</sup> concentrations [25]. Importantly, arachidonic acid up-regulates COX-2 expression and PG production in a variety of cell types [26,27]. Parent, et al. [28], demonstrated that exogenous arachidonic acid stimulates COX-2 expression followed by a 30-fold increase in PG production by bovine endometrial epithelial cells. In BEND cells, arachidonic acid enhanced PGF<sub>2α</sub> production in PDBu-stimulated cells [29]. It is suggested that PDBu-activation of the PKC/MAPK pathway results in increased activity and expression of PLA2G4A which liberates arachidonic acid from perinuclear membranes. Endogenous arachidonic acid then may serve both as substrate for, and inducer of, COX-2 which completes the committed step in PG biosynthesis. Our results demonstrating phorbol ester stimulation of PLA2G4A activity and expression do not preclude the possibility of similar actions on COX-2 expression. Hughes-Fulford et al. [27] suggested that activation of PLA2G4A expression may involve signaling mechanisms similar to those of COX-2, since the genes have several identical promoter elements and the genes are on the same region of the same chromosome, in mice and humans. The genes for PLA2G4 and COX-2 are located in the same region of chromosome 16 in cattle [30] and review of the promoter region revealed several promoter elements in common. This raises the possibility that the two genes may be co-regulated, a phenomenon observed by others [31].

The mechanism by which IFNT exerts negative regulation on PG production in BEND cells is unclear. Guzeloglu, et al, [24] investigated effects of IFNT on COX-2 mRNA stability and concluded that IFNT may diminish PDBu-stimulated PG production by accelerating COX-2 degradation, mediated through an unidentified transcription dependent mechanism. Thatcher, et al, [12] suggested that IFNT, acting through Type I IFN receptors, activates the Janus kinase (JAK)-signal transducer and activator of transcription (STAT) pathway in a manner that directly represses COX-2 expression. Our results indicate that IFNT diminishes PLA2G4A expression, which would, in turn, reduce arachidonic acid release potentially resulting in diminished COX-2 expression and PG production. As indicated above, COX-2 and PLA2G4A gene expression may be co-regulated since the promoter region of each share common elements, including IFN response elements [12,32].

Results from the present study with BEND cells differ from results of our previous study with bovine luminal endometrial epithelial cells [19]. Similar to studies by others [14] BEND cells produced 10–20 fold more PGE<sub>2</sub> than PGF<sub>2α</sub>, whereas luminal endometrial epithelial cells pro-

duce greater quantities of the latter. PDBu stimulation of BEND cell PG production did not affect PLA2G6 expression or activity and the PLA2G6 inhibitor, bromoenol lactone, did not diminish BEND cell PG production. Conversely, stimulation of PGF<sub>2α</sub> production with oxytocin in luminal endometrial epithelial cells increased PLA2G6 expression and activity and this response was attenuated by bromoenol lactone. In BEND cells, the PLA2G4A inhibitor, PYR-1, diminished PG production in unstimulated cells and abolished PDBu stimulation of PG production whereas it had little effect on luminal endometrial epithelial cell PG production (Ochs, Roberts, Elgayyer, Godkin and Tithof, unpublished observation). Together, these results indicate that PG production by the two cell types may be regulated by different PLA<sub>2</sub> isotypes. Another possible explanation for the discordant results may be that stimulation with a phorbol ester may result in activation of signal transduction pathways different from those activated by oxytocin.

### Conclusion

PGE2 and PGF<sub>2</sub>-alpha production by BEND cells is mediated by the activity and expression of PLA2G4A. Interferon-tau treatment diminished expression of PLA2G4A and PG production. BEND cells were shown to express PLA2G6 but, unlike primary or early passage luminal bovine endometrial cells, stimulation of PLA2G6 activity was not associated with increased PG production. Identification of PLA<sub>2</sub> enzymes as key regulators of PG production may lead to novel methods of regulating prostanoid production.

### Competing interests

The authors declare that they have no competing interests.

### Authors' contributions

JDG designed the study, overall, and drafted the manuscript. MPR performed the PG assays. WG and ME performed the PLA<sub>2</sub> and Western blot assays. PKT supervised the assays and helped draft the manuscript. All authors read and approved the manuscript.

### References

- Poyser NL: **The control of prostaglandin production by the endometrium in relation to luteolysis and menstruation.** *Prostaglandins Leukot Essent Fatty Acids* 1995, **53**:147-195.
- Capper EA, Marshall LA: **Mammalian phospholipases A<sub>2</sub>: mediators of inflammation, proliferation and apoptosis.** *Prog Lipid Res* 2001, **40**:167-197.
- Smith WL, DeWitt DL, Gavito RM: **Cyclooxygenase: structure, cellular and molecular biology.** *Ann Rev Biochem* 2000, **69**:145-182.
- Helmer SD, Gross TS, Newton GK, Hansen PJ, Thatcher WW: **Bovine trophoblast protein-1 complex alters endometrial protein and prostaglandin secretion and induces an intracellular inhibitor of prostaglandin synthesis in vitro.** *J Reprod Fertil* 1989, **87**:421-430.
- Godkin JD, Smith SE, Johnson RD, Dore JJE: **The role of trophoblast interferons in the maintenance of early pregnancy in ruminants.** *Am J Reprod Immunol* 1997, **37**:137-143.
- Burns PD, Graf GA, Hayes SH, Silvia WJ: **Cellular mechanism by which oxytocin stimulates uterine PGF<sub>2α</sub> synthesis in bovine endometrium: Role of Phospholipases C and A<sub>2</sub>.** *Dom Anim Endocrinol* 1997, **14**:181-191.
- Danet-Desnoyers G, Wetzels C, Thatcher WW: **Natural and recombinant bovine interferon τ regulate basal and oxytocin-induced secretion of prostaglandin F<sub>2α</sub> and E<sub>2</sub> by epithelial cells and stromal cells in the endometrium.** *Reprod Fertil Dev* 1994, **6**:193-202.
- Fortier MA, Guibalt LA, Grasso F: **Specific properties of epithelial and stromal cells from the endometrium of cows.** *J Reprod Fertil* 1998, **83**(1):239-248.
- Asselin E, Drolet P, Fortier MA: **Cellular mechanisms involved during oxytocin induced prostaglandin F<sub>2α</sub> production in endometrial epithelial cells in vitro: role of cyclooxygenase-2.** *Endocrinology* 1997, **138**:4798-4805.
- Parent J, Willeneuve C, Alexenko AP, Ealy AD, Fortier MA: **Influence of different isoforms of recombinant trophoblastic interferons on prostaglandin production in cultured bovine endometrial cells.** *Biol Reprod* 2003, **68**:1035-1045.
- Xiao CW, Murphy B, Sirois J, Goff AK: **Down-regulations of oxytocin-induced cyclooxygenase-2 and prostaglandin F synthesis by interferon-τ in bovine endometrial cells.** *Biol Reprod* 1999, **60**:658-663.
- Thatcher WW, Guzeloglu A, Mattos R, Binelli M, Hansen TR, Pru JK: **Uterine-conceptus interactions and reproductive failure in cattle.** *Theriogenology* 2001, **56**:1435-1450.
- Staggs KL, Austin KJ, Johnson GA, Teixerria MG, Talbott CT, Dooley VA, Hansen TR: **Complex induction of bovine uterine proteins by interferon-tau.** *Biol Reprod* 1998, **59**:293-297.
- Parent J, Chapdelaine P, Sirois J, Fortier MA: **Expression of microsomal prostaglandin E synthase in bovine endometrium: coexpression of cyclooxygenase type 2 and regulation by interferon-τ.** *Endocrinol* 2002, **143**:2936-2943.
- Guzeloglu A, Michel F, Thatcher WW: **Differential effects of interferon-τ on the prostaglandin synthetic pathway in bovine endometrial cells with phorbol ester.** *J Dairy Sci* 2004, **87**:2032-2041.
- Binelli M, Guzeloglu A, Badinga L, Arnold DR, Sirois J, Hansen TR, Thatcher WW: **Interferon-τ modulates phorbol ester-induced production of prostaglandin and expression of cyclooxygenase-2 and phospholipase-A<sub>2</sub> from bovine endometrial cells.** *Biol Reprod* 2000, **63**:417-424.
- Slarzynski DJ, Uenoyama Y, Kotwica J, Okuda K: **Noradrenaline stimulates the production of prostaglandin F<sub>2α</sub> in cultured bovine endometrial cells.** *Biol Reprod* 1999, **60**:279-282.
- Six DA, Dennis EA: **The expanding superfamily of phospholipase A (2) enzymes: classification and characterization.** *Biochim Biophys Acta* 2000, **1488**:1-19.
- Tithof PK, Roberts MP, Guan W, Elgayyar M, Godkin JD: **Distinct phospholipase A2 enzymes regulate prostaglandin E2 and F2alpha production by bovine endometrial epithelial cells.** *Reprod Biol Endocrinol* 2007, **5**:16-27.
- Tithof PK, Elgayyar M, Cho Y, Guan W, Fisher AB, Peters-Golden M: **Polycyclic aromatic hydrocarbons present in cigarette smoke cause endothelial cell apoptosis by a phospholipase A<sub>2</sub>-dependent mechanism.** *FASEB J* 2002. published on-line [10.1096/fj.01-0909fje](https://doi.org/10.1096/fj.01-0909fje).
- Gosh M, Tucker DE, Burchett SA, Leslie CC: **Properties of the Group IV phospholipase A<sub>2</sub> family.** *Progress Lipid Res* 2006, **45**:487-510.
- Lindstrom T, Bennett P: **Transcriptional regulation of genes for enzymes of the prostaglandin biosynthetic pathway.** *Prostaglandins Leukot Essent Fatty Acids* 2004, **70**:115-135.
- Pru JK, Rueda BR, Austin KJ, Thatcher WW: **Interferon-tau suppresses prostaglandin F<sub>2α</sub> secretion independently of the mitogen-activated protein kinase and nuclear factor κB pathway.** *Biol Reprod* 2001, **64**:965-973.
- Guzeloglu A, Subramaniam P, Michel F, Thatcher WW: **Interferon-tau induces degradation of prostaglandin H synthase-2 messenger RNA in bovine endometrial cells through a transcription-dependent mechanism.** *Biol Reprod* 2004, **71**:170-176.
- Ramanadhan S, Gross R, Turk J: **Arachidonic acid induces an increase in cytosolic calcium concentrations in single pancreatic islet beta cells.** *Biochem Biophys Res Commun* 1992, **184**:647-653.
- Priget-Tessier A, Pageaux JF, Fayard JM, Lagarde C, Cohen H: **Arachidonic acid up-regulates and prostaglandin E2 down-regulates the expression of pancreatic-type phospholipase A2**



- and prostaglandin-endoperoxide synthase 2 in uterine stromal cells. *Eur J Biochem* 1996, **241**:872-878.
27. Hughes-Fulford M, Li CF, Boonyaratanakornkit J, Sayyah S: **Arachidonic acid activates phosphatidylinositol 3-kinase signaling and induces gene expression in prostate cancer.** *Cancer Res* 2006, **66**:1427-1433.
  28. Parent J, Villeneuve C, Fortier MA: **Evaluation of the contribution of cyclooxygenase 1 and cycooxygenase 2 to the production of PGE<sub>2</sub> and PGF<sub>2α</sub> in epithelial cells from bovine endometrium.** *Reproduction* 2003, **126**:539-547.
  29. Mattos R, Guzeloglu A, Badinga L, Staples CR, Thatcher VWW: **Polyunsaturated fatty acids and bovine interferon-τ modify phorbol ester-induced secretion of prostaglandin F<sub>2α</sub> and expression of endoperoxide sythase-2 and phospholipase A<sub>2</sub> in bovine endometrial cells.** *Biol Reprod* 2003, **69**:780-787.
  30. e! Ensembl Cow ContigView [[http://www.ensembl.org/Bos\\_Taurus/contigview/index.html](http://www.ensembl.org/Bos_Taurus/contigview/index.html)]
  31. Croxtal JD, Newman SP, Choudhury Q, Flowers RJ: **The concerted regulation of cPLA<sub>2</sub>, COX-2 and lipocortin 1 expression by IL-1 beta in 549 cells.** *Biochem Biophys Res Commun* 1996, **220**:491-495.
  32. Wu T, Angus CW, Shelhamer JH: **Characterization of the promoter for the human 85 kDa cytosolic phospholipase A<sub>2</sub> gene.** *Nucleic Acid Res* 1994, **22**:5093-5098.

Publish with **BioMed Central** and every scientist can read your work free of charge

*"BioMed Central will be the most significant development for disseminating the results of biomedical research in our lifetime."*

Sir Paul Nurse, Cancer Research UK

Your research papers will be:

- available free of charge to the entire biomedical community
- peer reviewed and published immediately upon acceptance
- cited in PubMed and archived on PubMed Central
- yours — you keep the copyright

Submit your manuscript here:  
[http://www.biomedcentral.com/info/publishing\\_adv.asp](http://www.biomedcentral.com/info/publishing_adv.asp)

